



We make boating **MORE** affordable!

# SUMMER FLYER



## VANCOUVER STORE

1667 West 5th Avenue, Vancouver, BC V6J 1N5  
Phone: 604-733-7031

## ONLINE

Your one stop online store with over **80,000 ITEMS**

Anchors.....	28	Foul Weather Gear.....	38 to 40	Refrigeration.....	34
Autopilots.....	10, 16	Fish Finders.....	7	Safety.....	22, 23, 26, 27
Batteries.....	33	Guide Books.....	37	Sailboat Instruments.....	8, 9, 17
BBQs, Cooking.....	33	Hardware.....	30 to 35	Seating, Tables.....	40
Electronics/Electrical.....	2 to 20	Heaters, Stoves.....	33	Stereos.....	40
Electric Outboards.....	22, 24, 25	Inflatables, Dinghies.....	23	Software/Mapping.....	9, 20
Fenders.....	35	Marine Paints.....	34	Water Pumps, Sanitation.....	32
Fishing Gear.....	21	PFD's.....	36, 38, 39	VHF Handhelds.....	12, 18 to 20
Flares.....	26, 27	Radars.....	3, 16	Windlasses, Winches.....	28, 29

## NEW BOAT OWNERS DISCOUNT PROGRAM

Do you have a new or new-to-you boat? Are you looking at getting ready for the season? Do you want to spend more time enjoying your boat rather than worrying about supplies? Then come into a Steveston Marine & Hardware location, with your proof of boat purchase:

- 1 To receive **15% OFF** non-sale items for **60 days**.
- 2 You also receive the best technical advice and support in the industry at your one-stop marine store. Steveston Marine & Hardware has been serving the boating community since 1941.
- 3 Open a cash account after your initial 60 days to receive discounts on non-sale items.
- 4 When you open an account at Steveston Marine & Hardware, you will receive our in-house email specials.

**SHOP ONLINE AT [WWW.STEVESTONMARINE.COM](http://WWW.STEVESTONMARINE.COM)**  
**OR CALL TOLL-FREE 1-800-656-5559**

**FREE SHIPPING** (on most orders over \$99) Some exceptions apply

Pricing is subject to change, due to SUPPLY CHAIN DISRUPTIONS, GLOBAL TARIFFS, CURRENCY and OIL PRICE FLUCTUATIONS. Products may not be exactly as shown. Prices valid until August 31st, 2026.



**GIFT CARDS AVAILABLE**

# GARMIN®

## GPSMAP



**NEW**  
FOR 2026

### GPSMAP 9000 SERIES

With Premium Chartplotter with Garmin Navionics+

- Premium 4k IPS sunlight-readable touchscreen display. Display size 19", 22", 24", 27".
- Up to 7 times faster processing power than previous generations.
- Video integration capabilities with HDCP distribution.
- Network with multiple chartplotters, cameras and sonars.

#### GPSMAP® 9210xsv

Premium Chartplotter with Garmin Navionics+™ and Sonar  
PART # 010-03175-03 SKU# 606561 **\$5,179<sup>99</sup>MAP**

#### GPSMAP® 9213xsv

Premium Chartplotter with Garmin Navionics+™ and Sonar  
PART # 010-03176-03 SKU# 606563 **\$6,999<sup>99</sup>MAP**

#### GPSMAP® 9217xsv

Premium Chartplotter with Garmin Navionics+™ and Sonar  
PART # 010-03177-03 SKU# 606565 **\$10,079<sup>99</sup>MAP**

#### GPSMAP® 9210

Premium Chartplotter with Garmin Navionics+™  
PART # 010-03175-01 SKU# 606560 **\$4,479<sup>99</sup>MAP**

#### GPSMAP® 9213

Premium Chartplotter with Garmin Navionics+™  
PART # 010-03176-01 SKU# 606562 **\$6,299<sup>99</sup>MAP**

#### GPSMAP® 9217

Premium Chartplotter with Garmin Navionics+™  
PART # 010-03177-01 SKU# 606564 **\$9,379<sup>99</sup>MAP**

#### GPSMAP® 9500 Black Box

PART # 010-02677-00 SKU# 606569 **\$7,249<sup>99</sup>MAP**

GPSMAP® 9219 PART # 010-02673-01 SKU# 606550 **\$14,499<sup>99</sup>MAP**

GPSMAP® 9222 PART # 010-02674-01 SKU# 606551 **\$16,679<sup>99</sup>MAP**

GPSMAP® 9224 PART # 010-02675-01 SKU# 606552 **\$19,579<sup>99</sup>MAP**

GPSMAP® 9227 PART # 010-02676-01 SKU# 606553 **\$24,649<sup>99</sup>MAP**

### GRID™ 20 (GARMIN REMOTE INPUT DEVICE)

- Provides intuitive, easy-to-use remote access and control of your entire Garmin marine system
- 360° all-in-one joystick with a rotary knob & push-to-select button

GRID™ 20 Vertical PART # 010-02011-00  
SKU # 002594 Reg. \$390<sup>99</sup> **Sale \$339<sup>99</sup>**



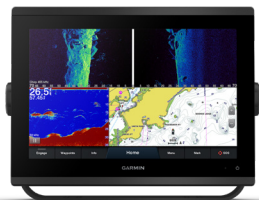
**SALE**  
**\$339<sup>99</sup>**

### GRID™ 20 HORIZONTAL

PART # 010-02011-01  
SKU # 002593  
Reg. \$391<sup>99</sup> **Sale \$339<sup>99</sup>**



**SALE**  
**\$339<sup>99</sup>**



### GPSMAP 7", 9", 12" SERIES

GPSMAP 7", 9" and 12" chartplotter series have higher resolution displays with more pixels than previous generation. The sonar versions also feature built-in Ultra High-Definition SideVü and ClearVü scanning sonar in new vivid sonar color palettes and support 1 kW CHIRP traditional sonar. (transducers sold separately)

- Supports Panoptix all-seeing sonar, including Panoptix LiveScope™ system.
- J1939 engine connectivity for easy integration with engines.
- Pre-loaded with Garmin Navionics+ Canada & Alaska - Lakes, Rivers and Coastal Marine mapping featuring Navionics® data and Auto Guidance technology.
- Integrated ANT® technology support for use with quatic® marine watches, gWind™ Wireless 2 wind sensor and wireless remote controls, including GRID™ 20 instrument.

#### Chartplotter only:

#### GPSMAP 743

PART # 010-02365-60 SKU# 606523 **\$1,599<sup>99</sup>MAP**

#### GPSMAP 943

PART # 010-02366-60 SKU# 606526 **\$2,029<sup>99</sup>MAP**

#### GPSMAP 1243 PART # 010-02367-60

SKU# 606529 **\$4,059<sup>99</sup>MAP**

#### With Sonar Built in:

#### GPSMAP 743xsv

PART # 010-02365-61 SKU# 606524 **\$1,739<sup>99</sup>MAP**

#### GPSMAP 943xsv

PART #010-02366-61 SKU# 606527 **\$2,179<sup>99</sup>MAP**

#### GPSMAP 1243xsv

PART # 010-02367-61 SKU# 606545 **\$4,349<sup>99</sup>MAP**

#### GPSMAP® 1543xsv

SideVü, ClearVü and Traditional CHIRP Sonar with Mapping  
PART # 010-03855-01 SKU# 606554 **\$6,299<sup>99</sup>MAP**

#### GPSMAP® 1643xsv

SideVü, ClearVü and Traditional CHIRP Sonar with Mapping  
PART # 010-02919-03 SKU# 606547 **\$7,249<sup>99</sup>MAP**

#### GPSMAP® 1643 Non-sonar with Mapping

PART # 010-02919-01 SKU# 606548 **\$6,959<sup>99</sup>MAP**

#### GPSMAP® 1243xsv With GMR™ 18 HD3 Radome

PART # 010-02367-53 SKU# 602285 **\$6,669<sup>99</sup>MAP**

#### GPSMAP® 943xsv With GMR™ 18 HD3 Radome

PART # 010-02366-53 SKU# 602284 **\$4,499<sup>99</sup>MAP**

GARMIN®

## RADAR

## GMR™ XHD3 RADOME &amp; OPEN ARRAY RADAR

## GMR™ 18 xHD3 Radome

PART # 010-02841-00 SKU# 602281 **\$2,899<sup>99</sup>**MAP

## GMR™ 24 xHD3 Radome

PART # 10-02842-00 SKU# 602282 **\$4,059<sup>99</sup>**MAP

## GMR™ 434 xHD3 Open Array Radar and Pedestal

PART # K10-00012-24 SKU# 602289 **\$6,819<sup>99</sup>**MAP

## GMR™ 436 xHD3 Open Array Radar and Pedestal

PART #10-00012-25 SKU# 602290 **\$7,979<sup>99</sup>**MAP

GMR™ 18/24 xHD3 Radome

GMR™ 434/436 xHD3  
Open Array Radar & Pedestal

## GMR FANTOM™ RADARS

The Fantom 18x & 24x, solid-state Dome & current Open array Fantom 54/56 radars both offer 50 watts of Pulse Compression power output.



GMR Fantom™ 254



GMR Fantom™ 54/56

GMR Fantom™ 18x  
(white or black)GMR Fantom™ 24x  
(white or black)

## GMR Fantom™ 18x (White)

PART # 010-02584-00 SKU# 606212 **\$3,189<sup>99</sup>**MAP

## GMR Fantom™ 18x (Black)

PART # 010-02584-10 SKU# 606213 **\$3,339<sup>99</sup>**MAP

## GMR Fantom™ 24x

(White) PART # 010-02585-00 SKU# 606214 **\$4,349<sup>99</sup>**MAP

## GMR Fantom™ 24x (Black)

PART # 010-02585-10 SKU# 606215 **\$4,499<sup>99</sup>**MAP

## GMR Fantom™ 54 (pedestal &amp; 4' array)

PART # K10-00012-18 SKU# 606456 **\$8,898<sup>99</sup>**MAP

## GMR Fantom™ 54 Open Array and Pedestal, Black

PART # K10-00012-30 SKU# 606460 **\$9,429<sup>99</sup>**MAP

## GMR Fantom™ 56 (pedestal &amp; 6' array)

PART # K10-00012-18 SKU# 606457 **\$9,719<sup>99</sup>**MAP

## GMR Fantom™ 56 Open Array and Pedestal, White

Part # K10-00012-18 SKU #606461 **\$10,149<sup>99</sup>**MAP

## GMR Fantom™ 124 (pedestal &amp; 4' antenna)

PART # K10-00012-19 SKU# 606458 **\$11,889<sup>99</sup>**MAP

## GMR Fantom™ 124 Open Array and Pedestal, Black

Part # K10-00012-32 SKU #606464 **\$12,329<sup>99</sup>**MAP

## GMR Fantom™ 126 (pedestal &amp; 6' antenna)

PART # K10-00012-20 SKU# 606459 **\$12,619<sup>99</sup>**MAP

## GMR Fantom™ 126 Open Array and Pedestal, Black

Part # K10-00012-33 SKU #606465 **\$13,049<sup>99</sup>**MAP

## GMR Fantom™ 254 Open Array and Pedestal, White

Part # K10-00012-21 SKU #606466 **\$16,239<sup>99</sup>**MAP

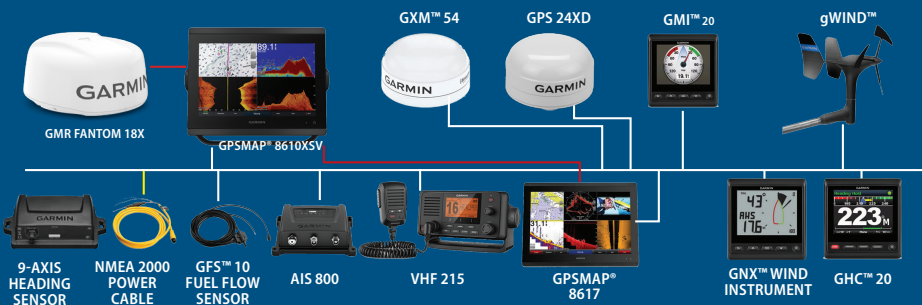
## GMR Fantom™ 254 Open Array and Pedestal, Black

Part # K10-00012-34 SKU #606467 **\$16,679<sup>99</sup>**MAP

## GARMIN MARINE NETWORK

GARMIN MARINE NETWORK

NMEA 2000



Pricing is subject to change, due to SUPPLY CHAIN DISRUPTIONS, GLOBAL TARIFFS, CURRENCY and OIL PRICE FLUCTUATIONS. Products may not be exactly as shown. Prices valid until August 31st, 2026.

# GARMIN®

## LIVESCOPE

### PANOPTIX LIVESCOPE™ PLUS SYSTEM

The New PANOPTIX LIVESCOPE™ PLUS SYSTEM gives you everything the previous model has with some new improved features.



**HIGH RESOLUTION** 35% improved target separation over existing LiveScope™ System. • **Image sharpness** Brilliantly clear sonar returns, minimal noise and on-screen artifacts (less "ghost tree"). • **Easy upgrade** The new transducer can be used with an existing LiveScope System black box (GLS™ 10) for an easy upgrade. • **Vivid color** Compatible with the vivid color palettes for enhanced detail and clarity. • **Force® Trolling motor compatible** Sized to fit the Force trolling motor as well as other leading trolling motors. • **Perspective mode mount** Use all three modes with the included Perspective Mode Mount.

**LiveScope™ Plus System** With GLS 10™ and LVS34 Transducer  
PART # 010-02706-00 SKU #606218 **\$2,469<sup>99</sup>** MAP

**LiveScope™ Plus System** LVS34 Transducer only -  
PART # 010-02706-10 SKU #606219 **\$1,739<sup>99</sup>** MAP

**LiveScope™ XR System** with GLS 10™ and LVS62 Transducer  
PART # 010-02719-00 SKU # 606136 **\$4,349<sup>99</sup>** MAP

**LiveScope™ XR System** LVS62 Transducer Only  
PART # 010-02719-10 SKU # 606137 **\$3,629<sup>99</sup>** MAP

### PANOPTIX LIVESCOPE™ SYSTEM

Available as transom trolling motor mount or thru-hull option

See highly detailed, easy-to-interpret live scanning sonar images of structure, bait and fish swimming below and around your boat in real time, even when your boat is stationary

- See incredibly sharp real-time scanning sonar images up to 200' around your boat Easily adjust the transducer with the Perspective Mode Mount for all 3 views – FORWARD- to see around your boat, DOWN- to see directly below your boat, & PERSPECTIVE MODE for an overhead 150 degree or more view
- The Attitude Heading Reference System stabilizes sonar view on chartplotter screen, even in rough conditions



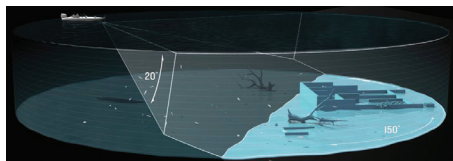
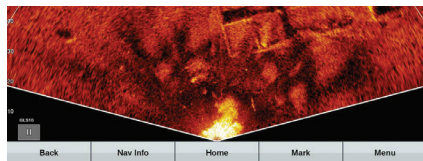
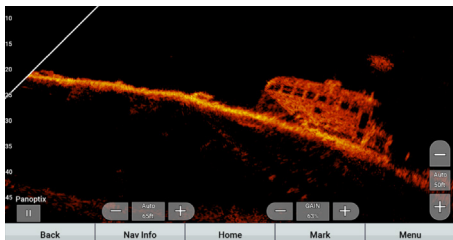
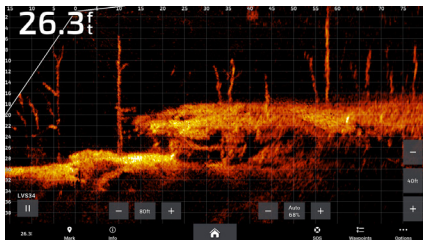
**LIVESCOPE™ SYSTEM - Thru Hull**  
PART# 010-02233-00  
SKU# 606167 **\$2,899<sup>99</sup>** MAP

**PANOPTIX™ PS22-IF**  
Portable Live Sonar  
PART # 010-01945-10  
SKU #602340 **\$1,599<sup>99</sup>** MAP



### LIVESCOPE SCREENSHOTS

With Panoptix Transducers, you can actually see fish and bait swimming all around, under or in front of your boat — in real time; even while stationary. They also offer remarkable 3D Views. (Depending on model)



## SONAR

## TRANSOM MOUNT

## Spy™ Pole

42" Motorized Pole Mount  
PART # 010-03012-00  
SKU #002498 **\$2,799<sup>99</sup> MAP**



## GT360UHD

Transducer for Spy™ Pole  
PART # 10-03012-10  
SKU #002497 **\$1,399<sup>99</sup> MAP**

## PANOPTIX PS30 &amp; PS31 TRANSDUCERS



## PANOPTIX™ PS30

PART #  
010-01284-00  
SKU # 602345  
**\$2,179<sup>99</sup> MAP**



## PANOPTIX™ PS31

Part #  
010-01284-01  
SKU # 602346  
**\$2,179<sup>99</sup> MAP**



## PANOPTIX™ PS22-TR TRANSDUCER

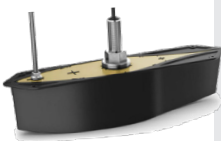
PART #  
010-01945-00  
SKU # 606372  
**\$1,449<sup>99</sup> MAP**

## PANOPTIX™ PS70

The Panoptix PS70 stainless steel thru-hull transducer is powered by Garmin RapidReturn™ sonar, which gives you live sonar views up to 1,000' below the surface.

**Panoptix™ PS70 With Transducer and Fairing Block**  
PART # 010-02768-00 SKU  
602347 **\$7,249<sup>99</sup> MAP**

**Panoptix™ PS70 Transducer Only** PART # 010-02768-10  
SKU 602348 **\$6,959<sup>99</sup> MAP**



## PANOPTIX™ PS51-TH THRU-HULL

FrontVü forward-looking sonar is used for collision avoidance with a narrow beam focusing on the bottom in front of your boat. Displays bottom up to 300 feet ahead of your boat in real time with nearly instant feedback to give you more time to react.

**Panoptix™ PS51-TH** PART # 010-01753-00  
SKU # 606154 Reg. **\$2,179<sup>99</sup> MAP**



## GT56UHD-TM

PART # 010-13073-00 SKU #606521 Reg. \$689<sup>99</sup> **Sale \$589<sup>99</sup>**

## GT54UHD-TM

Ultra High-Definition Scanning Sonar All-in-one Transducer  
PART # 010-12909-00 SKU #606520 Reg. \$449<sup>99</sup> **Sale \$429<sup>99</sup>**

## GT36UHD-TM

PART # 010-13072-00 SKU #606514 Reg. \$559<sup>99</sup> **Sale \$529<sup>99</sup>**

## GT24UHD-TM

Ultra High-Definition Scanning Sonar All-in-one Transducer  
PART # 010-12908-00 SKU #606518 Reg. \$304<sup>99</sup> **Sale \$259<sup>99</sup>**

## GT51M-TM

PART # 010-01966-00 SKU #602611 Reg. \$869<sup>99</sup> **Sale \$749<sup>99</sup>**

## GT52HW-TM

PART # 010-12405-00 SKU #662893 Reg. \$434<sup>99</sup> **Sale \$395<sup>99</sup>**

## GT23M-TM

PART # 010-12404-00 SKU #002614 Reg. \$304<sup>99</sup> **Sale \$269<sup>99</sup>**

## GT20-TM 4-pin Connector

PART # 010-01960-00 SKU #602963 Reg. \$144<sup>99</sup> **Sale \$119<sup>99</sup>**

## GT15M-TM

PART # 010-12402-10 SKU #606021 Reg. \$289<sup>99</sup> **Sale \$269<sup>99</sup>**

## GT15M-IH

PART # 010-12402-00 SKU #002610 Reg. \$289<sup>99</sup> **Sale \$239<sup>99</sup>**

GT56  
UHD-TM



GT51  
M-TM



GT54UHD-TM



## GSD 25 Premium Sonar Module

Premium remote network sonar solution. Includes true dual-channel 1 kW CHIRP, plus CHIRP SideVü & ClearVü scanning sonar for the clearest images on the water. Provides serious sportsfishers outstanding fishfinding. Distinguish between small and closely spaced fish at key fishing depths. Depth capability to 5,000 feet.

PART # 010-01159-00 SKU #602278  
Reg. \$1,377<sup>99</sup> **Sale \$1,299<sup>99</sup>**



## GSD™ 28 Sonar Module

Catch what's down there. Take your sport fishing to extreme depths with a high-powered sonar module.

PART # 010-02797-00  
SKU # 602257 **\$4,349<sup>99</sup> MAP**



## UHD GCV™ 20 Scanning Sonar Module

Clarity and detail are redefined with the Ultra HighDefinition scanning sonar system. • UHD sonar system provides Brilliant image clarity of structure and fish up to 200' deep below your boat

Part # 010-02055-10  
SKU # 606399 Reg. \$608<sup>99</sup> **Sale \$529<sup>99</sup>**



GARMIN®

ECHOMAP



ECHOMAP™ 75cv UHD2 with GT20 transducer & ECHOMAP™ UHD2 75sv & 95sv With NEW GT56UHD-TM Transducer

**NEW**  
FOR 2026



ECHOMAP™ Ultra 2 16" Chartplotter

## ECHOMAP UHD2 SERIES

With New Vivid Sonar color palettes & GT56 UHD2 Transducers (sv versions) with 20% greater range in SideVu sonar\*

• Bright, sunlight-readable 5", 6", 7" or 9" display; the 7" and 9" combos offer touchscreen with keyed-assist displays. • Support for Ultra High-Definition ClearVu and Ultra High Definition SideVu scanning sonars and Garmin CHIRP traditional sonar; SideVu available in 7" and 9"sv models only. • Available with or without GT20UHD2-TM transducer for "cv" models or NEW GT56UHD2-TM transducer for "sv" models with 20% greater range and three frequencies for top performance at all depths. • 7" and 9" models support Panoptix all-seeing sonar, including Panoptix LiveScope™ system. • 7" and 9" models include sharing capabilities with other ECHOMAP Plus, ECHOMAP UHD2 and ECHOMAP Ultra units, which include sonar data, waypoints, routes and supplemental charts. • NMEA 2000™ and NMEA 0183 network support for autopilot, SteadyCast™ heading sensor, FUSION-Link™ audio system and engine data. • All UHD2 models offered below have preloaded Garmin Navionics+ Canada & Alaska-Lakes, Rivers and Coastal Marine mapping. • Quick-release bail mount for fast and easy removal and storage. • TROLLING MOTOR INTEGRATION -7" and 9" models offer compatibility with Force™ trolling motor for full control of the motor from the screen plus the ability to route to waypoints, follow tracks and more

**ECHOMAP UHD2 5" 55cv** with GT20-TM Transducer  
PART # 010-02592-50 SKU #606235 **\$659<sup>99</sup>** MAP

**ECHOMAP UHD2 6" 65sv** UHD2 6" with GT54UHD-TM Transducer  
PART # 010-02682-00 SKU # 606239 **\$1,319<sup>99</sup>** MAP

**ECHOMAP UHD2 7" 75cv** UHD2 with GT20-TM Transducer  
PART # 010-02596-50 SKU # 606236 **\$949<sup>99</sup>** MAP

**ECHOMAP UHD2 7" 75sv** UHD2 with GT56UHD-TM Transducer  
PART # 010-02686-00 SKU #606240 **\$1,529<sup>99</sup>** MAP

**ECHOMAP UHD2 9" 95sv** UHD2 with GT56UHD-TM Transducer  
PART # 010-02690-00 SKU #606238 **\$1,889<sup>99</sup>** MAP

## ECHOMAP ULTRA 2 SERIES

Tell a new fish story with the ECHOMAP Ultra 2 chartplotter. It features a 10" or 12" touchscreen with keyed assist IPS display and optional Garmin Navionics+™ maps, which include a 1-year subscription to daily updates. There's also support for the full line of LiveScope™ sonars as well as ClearVu™ and SideVu™ scanning sonars plus CHIRP traditional sonar.

### ECHOMAP™ Ultra 2 10" Chartplotters

106sv with GT56UHD-TM Transducer; Includes Garmin Navionics+™ U.S. Inland & Coastal Mapping  
PART # 010-02880-01 SKU #606603 **\$3,339<sup>99</sup>** MAP

### ECHOMAP™ Ultra 2 10" Chartplotters

106sv without Transducer; Includes Garmin Navionics+™ U.S. Inland & Coastal Mapping  
PART # 010-02880-00 SKU #606602 **\$2,759<sup>99</sup>** MAP

### ECHOMAP™ Ultra 2 12" Chartplotters

126sv with GT56UHD-TM Transducer; Includes Garmin Navionics+™ U.S. Inland & Coastal Mapping  
PART # 010-02882-01 SKU #606607 **\$4,499<sup>99</sup>** MAP

### ECHOMAP™ Ultra 2 12" Chartplotters

126sv without Transducer; Includes Garmin Navionics+™ U.S. Inland & Coastal Mapping  
PART# 010-02882-00 SKU #606606 **\$3,919<sup>99</sup>** MAP

### ECHOMAP™ Ultra 2 16" Chartplotters

166sv with GT56UHD-TM Transducer  
PART # 010-03386-01 SKU #606608 **\$6,719<sup>99</sup>** MAP

### ECHOMAP™ Ultra 2 16" Chartplotters

166sv without Transducer  
PART # 10-03386-00 SKU #606609 **\$6,439<sup>99</sup>** MAP

### ECHOMAP™ Ultra 2 Ice House System

Includes ECHOMAP™ Ultra 2 166sv Chartplotter and LiveScope™ Plus System  
PART# 010-03386-02 SKU #606610 **\$8,819<sup>99</sup>** MAP

## BUNDLES

### PANOPTIX™ PS22-IF ICE FISHING BUNDLE

Includes ECHOMAP™ UHD2 75sv, Panoptix PS22-IF Transducer and Pole-free Transducer Rotation System  
PART # 010-02686-30  
SKU #602355 **\$2,899<sup>99</sup>** MAP



**NEW**  
FOR 2026

### LIVESCOPE™ PLUS LITHIUM-ION ICE FISHING BUNDLE

Includes ECHOMAP™ UHD2 95sv, LiveScope Plus System & Lithium-ion Battery  
PART # 010-02690-35  
SKU #602356 **\$4,789<sup>99</sup>** MAP



**NEW**  
FOR 2026

## FISHFINDERS

## STRIKER VIVID SERIES FISHFINDERS

STRIKER™ Vivid Fishfinder Series. These easy-to-use devices now feature high-contrast color palettes to make it easier to see what's beneath the surface & come in 4", 5", 7" & 9" screen sizes. They each include a transducer for best-in-class Garmin CHIRP traditional sonar, CHIRP ClearVu and CHIRP SideVu (7sv and 9sv only) scanning sonars and tilt/swivel mount.



GPSMAP1242xsv

### GPSMAP 1022, 1222, 1042XSV, 1242XSV SERIES WITH BUTTON INTERFACE

- 10" & 12" colour displays with keypad interface and multifunction control knob
- Built-in support for Garmin CHIRP sonar and CHIRP ClearVu and CHIRP SideVu scanning sonars ("xsv" versions)
- Pre-loaded with Garmin Navionics+ Canada & Alaska- Lakes, Rivers and Coastal Marine mapping, featuring Navionics® data and Auto Guidance technology. (1042xsv & 1242xsv versions)
- High-sensitivity internal 10 Hz GPS and GLONASS receiver
- Fully network capable for Garmin Marine Network and NMEA 2000® connectivity plus NMEA 0183 support

**GPSMAP 1222** (worldwide basemap only)  
PART # 010-01741-00 SKU # 606112 **\$2,889<sup>99</sup>** MAP

**GPSMAP1242xsv** no transducer  
PART # 010-01741-50 SKU #606534 **\$3,339<sup>99</sup>** MAP

**GPSMAP 1242xsv** (Includes GT52HW-TM transducer)  
PART # 010-01741-60 SKU #606535 **Reg. \$3,769<sup>99</sup>** MAP

**GPSMAP 1022** (worldwide basemap only)  
PART # 010-01740-00 SKU # 606108 **\$1,889<sup>99</sup>** MAP

**GPSMAP 1042xsv**  
PART # 010-01740-50 SKU # 606532 **\$2,319<sup>99</sup>** MAP

**GPSMAP 1042xsv** (Includes GT52HW-TM transducer)  
PART # 010-01740-60 SKU # 606533 **\$2,759<sup>99</sup>** MAP



#### STRIKER VIVID 4CV WITH TRANSDUCER

- Bright, sunlight-readable 4.3" display
  - STRIKER VIVID 4cv WW with GT20-TM Transducer (CHIRP Traditional & ClearVu sonar)
- PART # 010-02550-01 SKU #606445 **\$269<sup>99</sup>** MAP



#### STRIKER VIVID 5CV WW WITH TRANSDUCER

- Bright, sunlight-readable 5" display
  - STRIKER VIVID 5cv WW with GT20-TM Transducer (CHIRP Traditional & ClearVu sonar)
- PART # 010-02551-01 SKU #606446 **\$469<sup>99</sup>** MAP



#### STRIKER VIVID 7CV & 7SV WW WITH TRANSDUCER

- Also add Built-in Wi-Fi® for access to ActiveCaptain™ app so you can receive smart notifications, access Quickdraw Contours Community & transfer waypoints and software update notifications
- Bright, sunlight-readable 7" display

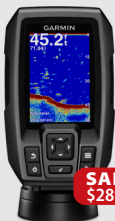
**STRIKER VIVID 7sv WW** with transducer  
PART # 010-02553-01 SKU # 606448 **\$759<sup>99</sup>** MAP

**STRIKER VIVID 7cv WW** with transducer  
PART # 010-02552-01 SKU # 606447 **\$619<sup>99</sup>** MAP



#### STRIKER VIVID 9SV WW WITH TRANSDUCER

- Built-in Wi-Fi® for access to ActiveCaptain™ app so you can receive smart notifications, access Quickdraw Contours Community & transfer waypoints and software update notifications
  - Built-in GPS lets you mark waypoints, create routes and view boat's speed
  - Bright, sunlight-readable 9" display
- PART # 010-02554-01 SKU # 606449 **\$899<sup>99</sup>** MAP



**SALE \$289<sup>99</sup>**

#### STRIKER 4 WITH DUAL BEAM TRANSDUCER

Great entry level priced Fishfinder. Includes transducer for built-in Garmin CHIRP traditional sonar • Bright, sunlight-readable 3.5" display • Also available as a Portable Bundle with portable carrying case perfect for fishing from a kayak or canoe and is especially handy for Ice Fishing

**STRIKER 4 with Dual Beam Transducer**  
PART # 010-01550-01 SKU # 602556  
Reg. \$202<sup>99</sup> **Sale \$179<sup>99</sup>**

**STRIKER 4 Portable Bundle**  
PART # 010-01550-10 SKU # 602561  
Reg. \$318<sup>99</sup> **Sale \$289<sup>99</sup>**

#### STRIKER™ CAST CASTABLE SONAR

The STRIKER Cast castable sonar lets you see where the fish are hiding. Just download the STRIKER Cast app, pair your compatible mobile device with the sonar and go fishing.

**STRIKER CAST WITH GPS** - PART # 010-02246-02  
SKU # 606429 Reg. \$249<sup>99</sup> **Sale \$224<sup>99</sup>**

**STRIKER CAST** - PART # 010-02246-00  
SKU # 606463 Reg. \$179<sup>99</sup> **Sale \$159<sup>99</sup>**



**SALE \$149<sup>99</sup>**

GARMIN®

## SAILBOAT INSTRUMENTS

**GNX™ 20 & 21 MARINE INSTRUMENT**

Marine Instrument with Standard 4" LCD  
 • Large, easy-to-read digits and graphs provides high contrast and high visibility; choose from 7 customizable backlight/digit colours<sup>1</sup> • Glass-bonded display with anti-glare lens avoids fogging • Fully customizable user profiles for sail or power boating to display most important marine and vessel data • 5 display configurations plus gauge and graph mode to display depth, speed, wind and 50+ marine and boat parameters

**GNX 20** PART # 010-01142-00

SKU # 602279

Reg. \$649<sup>99</sup> **Sale \$569<sup>99</sup>****GNX 21** PART # 010-01142-10SKU # 602288 Reg. \$649<sup>99</sup>(inverted display) **Sale \$596<sup>99</sup>****GNX™ 120 & 130 LARGE FORMAT MARINE INSTRUMENTS**

Create a High-performance Glass Mast  
 • High-precision glass-bonded backlit LCD display avoids fogging • Bold digits are the largest digits in class • Provides the data necessary to make confident decisions • Displays more than 50 marine and boat parameters for wind, sea and vessel conditions • Integrated sailing ecosystem allows seamless sharing of sailing data between Garmin devices

**GNX 120 (7" display)**

PART # 010-01395-00

SKU # 602287 **\$1,379<sup>99</sup>** MAP**GNX 130 (10" display)**

PART # 010-01396-00

SKU # 602308 **\$2,249<sup>99</sup>** MAP**GNX™ WIRELESS SAIL PACK 43**

Includes Garmin GNX™ Wind and GNX 20 marine instruments with highly visible monochrome LCD displays, gWind Wireless 2 or gWind Wired Transducer, GDT 43 and GST 43 with 43 mm fittings and adapters for NMEA 2000 network sharing  
 • Accurate water depth, water speed and water temperature data and more • Easy plug-and-play installation with NMEA 2000 network

**GNX™ WIRED SAIL PACK 43**

PART # 010-01248-60

SKU # 606165 **\$1,667<sup>99</sup>** Sale **\$1,449<sup>99</sup>****GNX™ WIRELESS SAIL PACK 43**

PART # 010-01616-30

SKU # 606162 **\$1,667<sup>99</sup>** Sale **\$1,369<sup>99</sup>****GMI™/GNX WIRED SAIL PACK 52**

Includes GMI 20 marine instrument, GNX 20 Marine Instrument, gWind transducer, GND™ 10 Black Box Bridge, AIRMAR DST810 thru-hull smart transducer, NMEA 2000 2 m drop cable (3x), NMEA 2000 power cable, NMEA 2000 T-connector (5x), NMEA 2000 terminators, mast cable with female connector (25 m), Nexus female field installable connector, mast bracket, mounting hardware

PART # 010-01248-90

SKU # 606513 **\$1,884<sup>99</sup>** Sale **\$1,599<sup>99</sup>****GNX™ WIRELESS SAIL PACK 52**

Includes GNX™ Wind instrument and

gWind™ Wireless 2 transducer

• GNX Wind provides 2 data fields and a

digital wind rose to simultaneously

display true and apparent wind data,

Steer Pilot, boat speed and more

• Displays true and apparent wind speed

and wind angles, true wind direction,

boat speed, speed over ground, VMG,

heading, course over ground and

closed haul

• Includes easy-to-install gWind Wireless

2 transducer, which eliminates cables

for masts up to 50 feet

PART # 010-01616-10

SKU # 606164

Reg. \$1,377<sup>99</sup> **Sale \$1,169<sup>99</sup>****GNX™ WIRED SAIL PACK 52**

GNX™ Wind marine instrument, GNX™ 20 marine instrument, gWind™ transducer, GND™ 10 black box bridge, AIRMAR DST810 thru-hull smart transducer, NMEA 2000™ 2 m drop cable (3x), NMEA 2000 power cable, NMEA 2000 T-connectors (5x), NMEA 2000 terminators, Nexus female field installable connector, mast bracket, mast cable with female connector (25 m), mounting hardware

PART # 010-01248-70

SKU # 606514 **\$2,102<sup>99</sup>** Sale **\$1,749<sup>99</sup>****THIS YEARS NEW UPDATED SAIL AND WIND PRODUCT BUNDLES FEATURING THE NEW AIRMAR DST810 SMART TRANSDUCER.**

This plastic thru-hull NMEA 2000® smart transducer combines precise depth, speed and temperature signals with attitude sensing for heel/trim and pitch/roll data. It can read depths to 330' and offers fast 5 Hz water speed signal output for smoother visualization on compatible chartplotters or other displays. Wireless BLUETOOTH™ connectivity makes it easy to manage calibration of sensor data through the AIRMAR Cast™ app interface. The transducer's wide, fan-shaped beamwidth of 10x44 degrees enables it to find bottom even when installed on steep deadrise hulls or heeling sailboats.

PART # 010-11051-20 SKU # 606516 **\$649<sup>99</sup>** Sale **\$499<sup>99</sup>**



**SALE**  
\$1,529<sup>99</sup>

### GMI™ WIRED START PACK 52

Includes GMI 20 marine instrument with a highly visible bright 4" color glass-bonded lens display with anti-glare finish, gWind transducer, GND 10 black box bridge, AIRMAR DST810 thru-hull Smart Transducer • NMEA 2000 2 m drop cable (2x), NMEA 2000 power cable, NMEA 2000 T-connector (4x), NMEA 2000 terminators, mast cable with female connector (25 m), Nexus female field installable connector, mast bracket, mounting hardware

PART # 010-01248-80

SKU # 606512 \$1,739<sup>99</sup> **Sale \$1,529<sup>99</sup>**



**SALE**  
\$1,769<sup>99</sup>

### GNX™ WIRELESS SAIL PACK 52

Includes GNX™ Wind Marine Instrument, GNX™ 20 Marine Instrument, gWind™ Wireless 2 Transducer, AIRMAR DST810 thru-hull smart transducer, NMEA 2000® 2 m drop cable (3x), NMEA 2000 power cable, NMEA 2000 T-connectors (5x), NMEA 2000 terminators, NiMH battery, mast bracket, mounting hardware

PART # 010-01616-40

SKU # 606515 \$2,102<sup>99</sup> **Sale \$1,769<sup>99</sup>**



### GARMIN GWIND™ TRANSDUCERS

Garmin gWind™ sensors are available in Wired, Wireless & Race versions & feature a 3-bladed propeller and twin-fin design for more accurate True Wind Speed (TWS) in lighter air and more stable True Wind Angle (TWA), designed for both sail and power vessels.

**gWIND™ WIRED TRANSDUCER** – PART # 010-01227-00

SKU # 602843 \$919<sup>99</sup> MAP

**gWIND™ WIRELESS 2 TRANSDUCER** – PART # 010-01616-00

SKU # 606163 Reg \$1,089<sup>99</sup> **Sale \$1,009<sup>99</sup>**

**GWIND™ RACE TRANSDUCER** Designed for racing sailboats • 3.3 feet (1 meter) straight pole raises the wind transducer above the mast to remove turbulence errors from the sail wash

PART # 010-01228-00 SKU # 602844 \$1,959<sup>99</sup> MAP

## CARTOGRAPHY



Introducing the next generation of cartography for Garmin marine devices!

### CANADA, WEST & ALASKA

Lakes, Rivers and Coastal Marine Charts. Garmin Navionics+™ | NSU5013R | microSD™/SD™ and One-year Subscription  
SKU # 606181 Reg. \$217<sup>99</sup> **Sale \$189<sup>99</sup>**

### CANADA, WEST & ALASKA

Lakes, Rivers and Coastal Marine Charts. Garmin Navionics Vision+™ | NVU5013R | microSD™/SD™ and One-year Subscription  
SKU # 606182  
Reg. \$362<sup>99</sup> **Sale \$299<sup>99</sup>**

### BLUECHART G3

Integrated Garmin and Navionics® content, also adds Auto Guidance Technology, providing all pertinent chart navigation, including up to 1-foot HD fishing contours, tides, currents, marine POIs, IALA symbols and perspective chart view. BlueChart g3 is ideal for handheld devices and for the value-oriented models of the Garmin chartplotter lineup. Available on microSD™/SD™ card **HXCA600X (Micro SD/SD)** - Covers all of Canada (West & East coasts) & both sides of the Great Lakes - **G3 HXCA600X** - SKU # 606178  
Reg. \$318<sup>99</sup> **Sale \$299<sup>99</sup>**

### BLUECHART G3 VISION

Premier Chart has all g3 features, Integrated Garmin and Navionics® content, Auto Guidance technology & ADDS High-resolution satellite imagery, 3-D views, & Aerial photos. Available on microSD/SD card.

**Puget Sound - Dixon Entrance - VCA501L (Micro SD/SD)** SKU #606177  
Reg. \$652<sup>99</sup> **Sale \$609<sup>99</sup>**



**NEW CHART GUARANTEE:** Charts will never be out of date with the Garmin New Chart Guarantee program. New Chart Guarantee is valid to be redeemed within 12 months of purchase on both pre-loaded Charts and SD Cards.

GARMIN®

AUTOPILOTS

## REACTOR 40 AUTOPILOTS - KEY FEATURES

Our Most Responsive Autopilot System on the Water. The Reactor 40 hydraulic autopilot keeps you on course at cruising speeds, minimizes heading error, reduces power consumption and more, so you can be more comfortable while cruising. Solid-state 9-axis Attitude Heading Reference System (AHRS) sensors provide reliable vessel control in all sea and weather conditions and consistent heading accuracy within 2 degrees. Flexible mounting options and quick, easy commissioning make installation easier.

### REACTOR™ AUTOPILOT REMOTE CONTROL

- This rugged, water-resistant remote places autopilot control in the palm of your hand
- Provides easy, convenient mode and steering control for your Garmin autopilot
- Gesture control for heading hold and course corrections lets you simply point the remote where you want to go
- Features a bright, sunlight-readable colour display and an ergonomic design for comfort and control
- Water-resistant design floats, in case it's dropped in the water

PART # 010-12833-10

SKU # 606455 \$391<sup>99</sup> Sale \$329<sup>99</sup>

### GHP™ REACTOR 40 HYDRAULIC COREPACK

- Our Most Responsive Autopilot System on the Water
- Solid-state 9-axis Attitude Heading Reference System (AHRS)
- Minimizes heading error, course deviation, rudder movement and power consumption while providing a comfortable ride
- Mounts nearly anywhere, in any orientation
- Minimal commissioning and calibration takes as little as 5 minutes



Reactor 40 Hydraulic Autopilot without GHC 20

PART # 010-00705-21 SKU # 606382 \$2,619<sup>99</sup> MAP

Reactor™ 40 Hydraulic Autopilot With GHC™ 50 Autopilot

Instrument Part # 010-02794-00 SKU #606142 \$3,369<sup>99</sup> MAP

### GARMIN REACTOR 40 HYDRAULIC COREPACK W-SMARTPUMP V2

- Garmin's Most Responsive Autopilot System on the Water
- Solid-state 9-axis Attitude Heading Reference System (AHRS) mounts in any orientation
- Minimal heading error, course deviation, rudder movement and power consumption with a more comfortable ride
- Minimal commissioning and calibration
- Shadow Drive™ technology keeps you in control, even when autopilot is engaged



Reactor™ 40 Hydraulic Corepack w-SmartPump v2 Without GHC™20

PART # 010-00705-78 SKU #606411 \$5,659<sup>99</sup> MAP

Reactor™ 40 Hydraulic Corepack with SmartPump v2 With GHC™ 50 Autopilot Instrument

PART # 010-02794-01

SKU #606246 \$6,379<sup>99</sup> MAP

### GHP™ REACTOR 40 STEER-BY-WIRE COREPACK FOR VIKING® VIPER™

- Solid-state 9-axis Attitude Heading Reference System
- Minimizes heading error, course deviation, rudder movement and power consumption while providing a comfortable ride
- Garmin brings an advanced marine technology once only available to commercial boats to the boating public in a complete package designed for powerboats and sailboats. The GHP Reactor 40 autopilot series is simply the most responsive autopilot system we have ever offered.

Reactor 40 Steer-by-wire Corepack for Viking Viper without GHC 20

PART # 010-00705-92 SKU # 606387 \$9,499<sup>99</sup> MAP

Reactor™ 40 Steer-by-wire Corepack for Viking® VIPER™ With GHC™ 50 Autopilot Instrument PART # 010-02794-05

SKU 606143 \$10,149<sup>99</sup> MAP

### REACTOR 40 STEER-BY-WIRE COREPACK FOR VOLVO PENTA

Reactor 40 steer-by-wire technology for vessels with Volvo Penta Inboard Performance Systems (IPS) and stern drive joystick systems.

Reactor 40 Steer-by-wire Corepack for Volvo Penta without GHC 20

PART # 010-00705-93 - SKU # 606398 \$8,919<sup>99</sup> MAP

Reactor™ 40 Steer-by-wire Corepack for Volvo-Penta® With GHC™ 50 Autopilot Instrument

PART # 010-02794-06

SKU 606144 \$9,569<sup>99</sup> MAP

GARMIN®

### GHP COMPACT REACTOR 40™ HYDRAULIC AUTOPILOT STARTER PACK

Designed for boats less than 30 feet long - Provides an extra set of hands, relief from manually holding the wheel to remain on course in heavy currents or winds - Solid-state 9-axis AHRS technology for less heading error, course deviation, rudder movement, power consumption and a more comfortable ride - 1 L geared pump supports hydraulic steering cylinders up to 16 cubic inches - Available in 3 different packs and price points:

Compact Reactor 40 - Hydraulic Autopilot - Starter Pack  
PART # 010-00705-06 SKU # 606390 **\$1,669<sup>99</sup> MAP**

Compact Reactor™ 40 Hydraulic Autopilot with GHC™ 50 Instrument Pack With GHC™ 50 Part # 010-02794-07  
SKU #606145 **\$2,619<sup>99</sup> MAP**

Compact Reactor™ 40 Hydraulic Autopilot with GHC™ 50 and Shadow Drive™ Technology Pack With GHC™ 50 and Shadow Drive PART # 010-02794-08  
SKU #606146 **\$3,189<sup>99</sup> MAP**

### GHP™ REACTOR 40 MECHANICAL/RETROFIT/SOLENOID COREPACK

- Solid-state 9-axis Attitude Heading Reference System (AHRS)
- Minimizes heading error, course deviation, rudder movement and power consumption while providing a comfortable ride
- Mounts nearly anywhere, in any orientation
- Minimal commissioning and calibration takes as little as 5 minutes
- Supports heading hold, wind hold, step turns and tack/jibe modes

Reactor 40 Mechanical/Retrofit/Solenoid Corepack without GHC 20 PART # 010-00705-48 SKU # 606392 **\$2,609<sup>99</sup> MAP**

Reactor™ 40 Mechanical/Retrofit/Solenoid Corepack With GHC™ 50 Autopilot Instrument PART # 010-02794-02  
SKU # 606147 **\$3,369<sup>99</sup> MAP**

### GHP™ REACTOR 40 STEER-BY-WIRE STANDARD COREPACK

- Solid-state 9-axis Attitude Heading Reference System
- Minimizes heading error, course deviation, rudder movement & power consumption
- Mounts nearly anywhere, in any orientation
- Minimal commissioning and calibration takes as little as 5 minutes
- Patented Shadow Drive™ technology keeps you in control even when autopilot is engaged. The GHP Reactor 40 for steer-by-wire provides robust autopilot capabilities for SeaStar® Optimus™ systems, Yanmar® Marine ZT 370 stern drive electronic power steering systems and ZF® 2800 Pod drives.

Reactor 40 Steer-by-wire Standard Corepack without GHC 20 PART # 010-00705-90 SKU # 606394 **\$3,419<sup>99</sup> MAP**

Reactor™ 40 Steer-by-wire Standard Corepack With GHC™ 50 Autopilot Instrument PART # 010-02794-03  
SKU #606148 Reg. **\$4,059<sup>99</sup> MAP**

### GHP™ REACTOR 40 STEER-BY-WIRE COREPACK FOR YAMAHA® HELM MASTER™

Solid-state 9-axis Attitude Heading Reference System (AHRS). Minimizes heading error, course deviation, rudder movement and power consumption while providing a comfortable ride. Mounts nearly anywhere, in any orientation. The GHP Reactor 40 for steer-by-wire provides robust autopilot capabilities for Yamaha Helm Master systems. Garmin brings an advanced marine technology once only available to commercial boats to the boating public in a complete package designed in conjunction with Yamaha to work seamlessly with their Helm Master system.

Reactor 40 Steer-by-wire Corepack for Yamaha® Helm Master™ without GHC 20  
Part # 010-00705-91 SKU # 606396 **\$4,349<sup>99</sup> MAP**

Reactor™ 40 Steer-by-wire Corepack for Yamaha® Helm Master™ With GHC™ 50 Autopilot Instrument Part # 010-02794-04 SKU # 606247 **\$5,019<sup>99</sup> MAP**

### REACTOR™ 40 KICKER AUTOPILOT

The Reactor 40 kicker autopilot is specially designed for boats with small gasoline outboard motors up to 20 horsepower. Whether you're going for salmon, trout, walleye or some other species, your Reactor 40 kicker autopilot can help you maintain heading hold and route to keep you on course — even against wind, waves or heavy current. It includes a convenient floating handheld remote control with bright, sunlight-readable display.

Reactor 40 Kicker Autopilot w/o GHC20  
PART# 010-00705-95  
- SKU #606409 - **\$3,409<sup>99</sup> MAP**

Reactor 40 Kicker Autopilot with stainless steel tilt tube  
PART # 010-00705-96  
SKU# 606410 - **\$3,479<sup>99</sup> MAP** (stainless steel tilt tube for Yamaha® and Honda outboards)

Reactor™ 40 Kicker Autopilot With GHC™ 50 Autopilot Instrument  
PART# 010-02794-09 SKU# 606412 **\$4,209<sup>99</sup> MAP**

Reactor™ 40 Kicker Autopilot With GHC™ 50 and Stainless Steel Tilt Tube PART# 010-02794-10  
SKU #606248 **\$4,349<sup>99</sup> MAP**



### GHC™ 50 MARINE AUTOPILOT INSTRUMENT

GHC 50 is a marine autopilot instrument featuring a 5" touchscreen, wireless Garmin Marine Network connectivity and is GHP Reactor compatible.  
PART # 010-02731-00  
SKU # 606245 **\$1,159<sup>99</sup> MAP**



GARMIN®

## COMMUNICATIONS



**VHF 115 MARINE RADIO** • Fixed-mount radio with plug and play via the NMEA 2000® network • Standard Class D Digital Selective Calling (DSC) functionality (distress calling and direct calling with user-programmed MMSI) • 25-watt transmit power with built-in GPS • Frequency bands include all U.S., Canadian and international marine channels plus 10 NOAA weather channels

PART # 010-02096-00  
SKU # 606169 Reg. \$579<sup>99</sup> **Sale \$499<sup>99</sup>**



**VHF 215 & VHF 215 AIS MARINE RADIOS**  
• Standard Class D Digital Selective Calling (DSC) functionality • 25-watt transmit power with built-in GPS • Compatible with the GHS™ 11 second-station handset • Frequency bands include all U.S., Canadian and international marine channels plus 10 NOAA weather channels • Removable fist microphone handset can be relocated away from the radio

VHF 215 AIS PART # 010-02098-00  
SKU #606170 Reg. \$1,014<sup>99</sup> **Sale \$879<sup>99</sup>**

VHF 215 PART # 010-02097-00  
SKU #606171 Reg. \$724<sup>99</sup> **Sale \$639<sup>99</sup>**

**VHF 315 MARINE RADIO**

• Reliable 25-watt VHF Class D DSC marine radio • Includes GHS™ 11 handset and new active speaker to use as intercom between up to 3 stations • Built-in GPS receiver (requires external antenna) • NMEA 2000® connectivity for easy integration with compatible chartplotters and multifunction displays  
• Preprogrammed with U.S., Canadian and international marine channels plus 10 NOAA weather channels

PART # 010-02047-00  
SKU # 606172  
Reg. \$1,229<sup>99</sup>  
**Sale \$959<sup>99</sup>**

**GHS 11 WIRED VHF**

Allows full function of your VHF radio from a remote location. A simple design that includes soft keys, a 2" diagonal display and a coiled cable that stretches up to 5'. A rotary/push knob for volume, squelch & channel selection makes it easy to use and a dedicated button for access to channels 16/9. All buttons/knobs resemble those of the VHF radio. In addition, it features a microphone that has intercom capabilities when connected to a speaker.

PART # 010-01759-00  
SKU # 606462 Reg. \$355<sup>99</sup>  
**Sale \$299<sup>99</sup>**

**AIS™ 800 BLACKBOX TRANSCIVER**

Easy-to-use, reliable communication transmits your vessel information to other AIS receivers in your area while receiving AIS target data, 5 watts of transmit power with Class B/ S0 provides faster positioning reporting than ever before. Built-in GPS with connector for optional external antenna, NMEA 2000® connectivity for easy integration with compatible chartplotters and multifunction displays, Internal VHF antenna splitter allows VHF and AIS to share a single antenna

PART # 010-02087-00  
SKU # 606173 Reg. \$1,449<sup>99</sup> **Sale \$1,349<sup>99</sup>**

**CORTEX M1 & V1**

**Cortex® M1 Hub SOTDMA SmartAIS Transponder with Remote Vessel Monitoring.**

The Cortex M1 hub combines advanced collision avoidance technology with proactive alerting plus remote monitoring and control of onboard systems from your compatible smartphone.

PART # 010-02815-20 SKU #607700 **\$1,959<sup>99</sup>**



**Cortex® V1 Hub VHF Radio with SOTDMA SmartAIS and Remote Vessel Monitoring.** With an intuitive touchscreen handset engineered for durability, the Cortex V1 communications hub integrates strong, clear audio with the power of AIS collision avoidance.

PART # 010-02814-20 SKU #607703 **\$2,759<sup>99</sup>**

**GLO™ 2**

The GLO 2 receiver combines GPS & GLONASS receivers with Bluetooth® wireless technology so you can enjoy precise positioning information on your iPad®, iPhone® or Android™ device.

PART # 010-02184-01  
GLO 2 Device Only  
SKU # 606174 **\$179<sup>99</sup> MAP**



**STEADYCAST™ HEADING SENSOR**

- Ensures bow orientation on your chartplotter matches your heading
- Easy NMEA 2000® plug-and-play interface
- 9-axis MEMS technology allows installation in any orientation located away from magnetic interference

PART # 010-11417-10

SKU #606157 Reg. \$217<sup>99</sup> **Sale \$209<sup>99</sup>****GPS 24XD ANTENNA**NMEA 2000® SKU  
602848 Reg. \$456.<sup>99</sup>  
**Sale \$424<sup>99</sup>****MSC 10 MARINE SATELLITE COMPASS**

Heading Sensor and Multi-band GPS Receiver 10. Get reliable, accurate heading information with the easy-to-install GPS-based MSC 10 marine satellite compass.

MSC™ 10 Marine Satellite Compass (Black)

PART # 010-02407-10 SKU #606150

**\$1,659<sup>99</sup> MAP**

MSC™ 10 Marine Satellite Compass (white)

PART # 010-02407-00 SKU #606149 **\$1,589<sup>99</sup> MAP****GXM™ 54**

Add SiriusXM® Weather and Radio Plus Fish Mapping Directly on Your Chartplotter

- See detailed weather information directly on your compatible Garmin chartplotter for increased situational awareness
- Refine the fish species that appear on the chartplotter map
- Experience high-quality entertainment with access to more than 150 channels of SiriusXM satellite radio

GXM 54 PART # 010-02277-00

SKU # 606205 Reg. \$1,232<sup>99</sup> **Sale \$1,099<sup>99</sup>****QUATIX® 8 MARINE SMARTWATCH**

The quatix® 8 is a marine smartwatch with a bright display, boat data streaming, health & wellness features, speaker & mic, & up to 16 days of battery life.

Quatix® 8 – 47 mm

PART # 010-02904-50 SKU #606231

**\$1,579<sup>99</sup> MAP**

Quatix® 8 Pro – 47 mm

PART # 010-03198-50 SKU #606232

**\$1,819<sup>99</sup> MAP**

Quatix® 8 – 51 mm

PART # 010-02905-90

SKU #606233 Reg. \$1,719<sup>99</sup> MAP**INREACH® MINI 3**

- Compact SOS Satellite Communicator with Photo and Voice Messaging.
- Global coverage via the Iridium® satellite network
  - Exchange text messages when off the grid
  - In case of an emergency, trigger an interactive sos message to the garmin response center

inReach® Mini 3 PART # 010-03387-00

SKU # 606222 **\$649<sup>99</sup> MAP**

inReach® Mini 3 Plus With Photo and Voice

PART # 010-03387-10

SKU # 606223 **\$699<sup>99</sup> MAP****INREACH® MESSENGER**

If you're venturing off the grid, this small, rugged satellite communicator goes beyond the limits of cellular networks to keep friends and family in reach with global two-way text messaging.

inReach® Messenger

PART # 010-02672-00

SKU #606220 **\$439<sup>99</sup> MAP**

inReach® Messenger Plus SOS Satellite Communicator with Photo &amp; Voice Messaging

PART # 010-02887-00

SKU #606221 **\$559<sup>99</sup> MAP****GPSMAP® 86i**

The GPSMAP 86i Marine Handheld With inReach® Capabilities built-in & GPSMAP 86s Marine Handheld... all the same features but without inReach - Water-resistant, floating design, sunlight-readable 3" display and button operation provide ease of use on the water.

SKU #602587

Reg. \$869<sup>99</sup> **Sale \$699<sup>99</sup>****GPSMAP® H1i PLUS**

a premium GPS handheld with touchscreen, TopoActive maps and inReach Plus technology for sharing photos, voice memos and texts when off grid.

With inReach® Plus Satellite Technology

PART # 010-02921-00 SKU #602604

**\$1,449<sup>99</sup> MAP****GPSMAP® H1**

Premium GPS Handheld

PART # 010-02920-00 SKU #602605

**\$979<sup>99</sup> MAP**

# Raymarine

## AXIOM™

### AXIOM2 PRO S 9", 12", 16" (WITH CHIRP CONICAL SONAR)



#### AXIOM2 PRO 9 S

AXIOM2 Pro 9 S HybridTouch 9" Multifunction Display with CHIRP Conical Sonar for CPT-S. With LightHouse North America Chart E70653-00-102  
SKU 038588 \$4,374<sup>99</sup>MAP



#### AXIOM2 PRO 12 S

AXIOM2 Pro 12 S HybridTouch 12" Multifunction Display with CHIRP Conical Sonar for CPT-S. With LightHouse North America Chart E70655-00-102  
SKU 038590 \$5,991<sup>99</sup>MAP



#### AXIOM2 PRO 16 S

AXIOM2 Pro 16 S HybridTouch 16" Multifunction Display with CHIRP Conical Sonar for CPT-S. With LightHouse North America Chart E70657-00-102  
SKU 038592 \$9,071<sup>99</sup>MAP

### AXIOM2 PRO RVM 9", 12", 16"

(WITH CHIRP REALVISION 3D, SIDEVISION, DOWNVISION, CONICAL SONAR AND 1KW SONAR)



#### AXIOM2 PRO 9 RVM

AXIOM2 Pro 9 RVM HybridTouch 9" Multifunction Display with Integrated 1kW Sonar, DV, SV and Realvision 3D Sonar. With LightHouse North America Chart E70654-00-102  
SKU 038594 \$4,836<sup>99</sup>MAP



#### AXIOM2 PRO 12 RVM

AXIOM2 Pro 12 RVM HybridTouch 12" Multifunction Display with Integrated 1kW Sonar, DV, SV and Realvision 3D Sonar. With LightHouse North America Chart E70656-00-102  
SKU 038596 \$6,222<sup>99</sup>MAP



#### AXIOM2 PRO 16 RVM

AXIOM2 Pro 16 RVM HybridTouch 16" Multifunction Display with Integrated 1kW Sonar, DV, SV and Realvision 3D Sonar. With LightHouse North America Chart E70658-00-102  
SKU 038600 \$9,302<sup>99</sup>MAP

#### AXIOM2 PRO RVM TRANSDUCERS

RVM-100 All-In-One Transom Mount Transducer, 8M Cable  
A80703 SKU 038578 Reg. \$972<sup>99</sup>  
RVM-400 RealVision 3D Stainless Steel Through Hull Transducer 0 Deg., Direct Connect to AXIOM2 and RVM1600 (8M Cable)  
A80704 SKU 038579 Reg. \$2,477<sup>99</sup>

Pack of RVM-412 RealVision 3D Stainless Steel Thru-Hull Transducers, Port & Starboard 12 Deg., Direct Connect to AXIOM2 and RVM1600 (2 X 2M, Y-Cable & 8M Ext. Cable)  
T70543 SKU 038580 Reg. \$3,849<sup>99</sup>

Pack of RVM-420 RealVision 3D Stainless Steel Thru-Hull Transducers, Port & Starboard 20 Deg., Direct Connect to AXIOM2 and RVM1600 (2 X 2M, Y-Cable & 8M Ext. Cable)  
T70544 SKU 038583 Reg. \$3,849<sup>99</sup>

SIMPLY SUPERIOR

AXIOM 2™

NEW  
FOR 2026**AXIOM 2 - 7**

AXIOM 2 - 7, Chartplotter with LHC North America  
E70720-00-102 SKU 038670 \$1,819<sup>99</sup>MAP

AXIOM 2 - 7, Chartplotter-Sonar  
with LHC North America  
E70721-00-102 SKU 038671 \$1,959<sup>99</sup>MAP

AXIOM 2 - 7, Chartplotter-Sonar with  
LHC North America and RV-100 Transducer  
E70721-03-102 SKU 038672 \$2,449<sup>99</sup>MAP

NEW  
FOR 2026

NETWORK CAPABLE

**AXIOM 2 - 9**

AXIOM 2 - 9, Chartplotter with LHC North America  
E70722-00-102 SKU 038673 \$2,239<sup>99</sup>MAP

AXIOM 2 - 9, Chartplotter-Sonar  
with LHC North America  
E70723-00-102 SKU 038674 \$2,379<sup>99</sup>MAP

AXIOM 2 - 9, Chartplotter-Sonar with LHC North  
America and RV-100 Transducer  
E70723-03-102 SKU 038675 \$2,869<sup>99</sup>MAP

NEW  
FOR 2026

NETWORK CAPABLE

**AXIOM 2 - 12**

AXIOM 2 - 12, Chartplotter with LHC North America  
E70724-00-102 SKU 038676 \$4,339<sup>99</sup>MAP

AXIOM 2 - 12, Chartplotter-Sonar  
with LHC North America  
E70725-00-102 SKU 038677 \$4,619<sup>99</sup>MAP

AXIOM 2 - 12, Chartplotter-Sonar with LHC North  
America and RV-100 Transducer  
E70725-03-102 SKU 038678 \$4,969<sup>99</sup>MAP

NEW  
FOR 2026

NETWORK CAPABLE

---

**TRANDUCERS FOR AXIOM + RV WITH CHIRP REALVISION 3D, SIDEVISION, DOWNVISION AND CONICAL SONAR**


---

**A80464** - RV-100 RealVision 3D  
Transom Mount Transducer (8M Cable)  
SKU# 038515 \$594<sup>99</sup>

**T70318** - Pack of RV-212 RealVision  
3D Bronze Through Hull Transducers,  
Port and Starboard 12 Degree (in-  
cludes 8M Transducer Extension Cable  
and Split Transducer Y-Cable)  
SKU# 001755 Reg. \$2,617<sup>99</sup>  
**Sale \$2,499<sup>99</sup>**

**T70319** - Pack of RV-220 RealVision  
3D Bronze Through Hull Transducers,  
Port and Starboard 20 Degree  
(includes 8M Transducer Extension  
Cable and Split Transducer Y-Cable)  
SKU# 023565 Reg. \$2,617<sup>99</sup>  
**Sale \$2,499<sup>99</sup>**

**T70320** - Pack of RV-312 RealVision  
3D Plastic Through Hull Transducers,  
Port and Starboard 12 Degree (in-  
cludes 8M Transducer Extension Cable  
and Split Transducer Y-Cable)  
SKU# 023566 Reg. \$2,617<sup>99</sup> **Sale \$2,449<sup>99</sup>**

**T70321** - Pack of RV-320 RealVision  
3D Plastic Through Hull Transducers,  
Port and Starboard 20 Degree  
(includes 8M Transducer Extension  
Cable and Split Transducer Y-Cable)  
SKU# 023567 Reg. \$2,617<sup>99</sup>  
**Sale \$2,449<sup>99</sup>**

# Raymarine



## QUANTUM 2

Introducing Raymarine **QUANTUM 2** Radar with Doppler collision avoidance technology. The Quantum 2 next generation CHIRP pulse compression radar by Raymarine provides superior target awareness at both long & extremely short ranges.

Quantum Q24C 18" radar with 10m power and 10m Data Cable  
T70243 - SKU 038323 \$2,995<sup>99</sup>MAP

Quantum 2 Q24D Doppler 18" Radar with  
10m Power and Data Cable - T70416 - SKU 038251 \$3,688<sup>99</sup>MAP

## EV AUTOPILOTS



**NEW**  
FOR 2026

**WIRELESS AUTOPILOT REMOTE CONTROL FOR EVOLUTION SYSTEMS**  
RCU-1 Autopilot Remote Control Kit with WG-1  
E70718 - SKU 003613 \$769<sup>99</sup>MAP



**EV-200 BELOW DECK SAILBOAT AUTOPILOT**  
EV-200 Linear Autopilot with p70s control head, ACU-200, EV1 Sensor Core, EV1 Cabling kit & Type 1 Mechanical Linear drive  
T70158 - SKU 040485 \$5,879<sup>99</sup>MAP



**EV-100 SAILBOAT WHEEL AUTOPILOT**  
EV-100 Wheel Pilot with p70s control head, ACU-100, EV1 Sensor Core, EV1 Cabling kit & Wheel Drive  
T70152 - SKU 040530  
Reg. \$3,079<sup>99</sup> **Sale \$2,499<sup>99</sup>**



## HYDRAULIC AUTOPILOTS

**EV-150 POWER PILOT**  
EV-150 Power Pilot with p70Rs control head, ACU-150, EV1 Sensor Core, EV1 Cabling kit & 1.0L hydraulic pump  
T70330 - SKU 040479 \$2,939<sup>99</sup>MAP



**EV-200 HYDRAULIC AUTOPILOT**  
EV-200 Hydraulic Autopilot with p70Rs control head, ACU-200, EV1 Sensor Core, EV1 Cabling kit & Type 1 Hydraulic pump  
T70157 - SKU 040490 \$4,899<sup>99</sup>MAP

SIMPLY SUPERIOR<sup>®</sup>**ALPHA DISPLAYS**

7 and 9-inch Performance Displays. The latest in boat instrumentation with portrait and landscape mounting options and a single data and power cable for easy installation.

Alpha 7" Performance Instrument Display  
E70649 SKU 009800 \$1,847<sup>99</sup>MAP

Alpha 9" Performance Instrument Display  
E70650 SKU 009801 \$3,079<sup>99</sup>MAP

**FLIR OCEAN SCOUT PRO**

Use Ocean Scout Pro to navigate confidently at night, identify navigation aids and find people in the water. Featuring a wide 32° field-of-view, Ocean Scout Pro allows for rapid area sweeps and detecting human heat signatures up to 500 meters away.  
15002-02-02 SKU 009775 \$3,353<sup>99</sup>MAP

**THERMAL CAMERA****FLIR M232**

The M232 pan and tilt camera is one of FLIR's smallest and affordable marine thermal cameras. Featuring a resolution of 320 x 240, the M232 improves safety by revealing vessels and obstacles at night. Enjoy 360 degree viewing while underway.  
E70354 SKU 009773  
\$4,333<sup>99</sup>MAP

**RSW WIRED WIND SENSOR**

The RSW Wired, Smart Wind transducer is a professional-level wind sensor designed to deliver highly accurate calibrated wind speed and direction data. Supplied with a 30m Smart Wind mast cable as standard.  
E70670  
SKU 009774 \$1,308<sup>99</sup>MAP

**I70S DEPTH, SPEED & WIND PACK**

Instrument pack with wind, depth and speed transducer. Includes iTC-5, 3M backbone, T piece, power and 2 backbone terminators  
T70216  
SKU 009819  
\$2,463<sup>99</sup>MAP





# ICOM

## SIMPLY THE BEST.

VHF/SSB MARINE TRANSCEIVERS - NMEA AWARD WINNING RADIOS



### IC-M330 VHF MARINE TRANSCEIVER

### IC-M330G VHF MARINE TRANSCEIVER GPS RECEIVER BUILT-IN

- IPX7 submersible (1 m depth of water for 30 minutes)
- AquaQuake™ prevents audio degradation
- NMEA interface for external GPS/NAV connection
- Dual/tri-watch function for monitoring CH16 and/or call channel
- Priority scan function
- Display and keypad backlighting
- External speaker connection
- Weather channel with weather alert
- Supplied hand microphone, HM-235B/W, with channel up/down keys and a CH16/Call channel key
- 3-digit or 4-digit channel display selectable
- Version available with GPS

M330 Black SKU #004246 **Sale \$239<sup>99</sup>**

M330 White SKU #004247 **Sale \$239<sup>99</sup>**

M330G with GPS Black SKU #004248 **Sale \$319<sup>99</sup>**

M330G with GPS White SKU #004249 **Sale \$319<sup>99</sup>**

### IC-M510 EVO MARINE VHF

- Ultra-wide viewing angle color TFT LCD with night mode
- Integrated AIS receiver and GPS receiver
- Integrated Wireless LAN for smart phone app
- Integrated NMEA2000

M510#41 SKU 004272 **\$1,074<sup>00</sup> MAP**

M510#51 SKU 004273 **\$1,274<sup>00</sup> MAP**



### MA-510TR CLASS B AIS TRANSPONDER WITH NAVIGATION FUNCTION AND NMEA 2000™ CONNECTIVITY

- New Navigation function guides you to the specified waypoints (maximum 100 waypoints are selectable) or AIS targets
- Wide viewing angle and high-luminance 4.3-inch color IPS TFT display readable under direct sunlight
- NMEA 2000™, NMEA 0183/-HS connectivity
- Compatible with both 12V and 24V power sources
- Man OverBoard (MOB) function and navigation to the MOB waypoint
- AIS data can be output from a USB cable connector on the rear panel\*

SKU #004258 **\$1,299<sup>00</sup> MAP**

## M94D VHF MARINE TRANSCEIVER WITH DSC AND AIS

Icom's Class-H DSC VHF transceiver, the M94D is the world's first handheld to possess the power of AIS. A class-leading 1500 mW speaker and ocean-conscious features, the M94D is perfect for small boats and leisure craft looking to stay safe and informed on the ocean.

SKU #004260  
\$449<sup>99</sup> MAP



## IC-M73 VHF HANDHELD

- 700 mW loud audio
  - IPX8 submersible
  - 6 watt output
- SKU #004219 \$299<sup>99</sup> MAP



## M73 PLUS HANDHELD VHF

- Battery Type Lithium Ion
  - Capacity - Battery (mAh) 2000 mAh
  - IPX Rating IPX8
  - Last call voice recording
  - Active noise cancelling technology
- SKU #004221 \$369<sup>99</sup> MAP

## IC-M37 6 W OUTPUT POWER & 700 MW AUDIO

- 6 W RF output power for long-distance communication
  - Powerful 700 mW audio output for clear communication
  - Large keys and easy-to-grip body for smooth operation, even when wearing gloves
  - More than 12 hours of long-lasting operating time with the BP-296 supplied Li-ion battery pack
  - Float'n Flash
  - IPX7 submersible construction
  - Channel history function stores the last five channels used for easy recall
  - AquaQuake™ prevents audio degradation from the speaker
  - Voice boost & mute functions
  - Low battery alert function
  - Dualwatch® & Tri-Watch functions
  - Instant access to channel 16
- SKU # 004256 \$269<sup>99</sup> MAP



## IC-M25 EVO VHF HANDHELD MARINE BAND TRANSCEIVER

- Available in Blue, Grey or White
  - Slim and lightweight
  - Float'n Flash
  - USB Type-C charging port
  - Power saving eco mode
- SKU #004245 - Blue  
SKU #004244 - Black  
Sale \$199<sup>99</sup>



NEW FOR 2026

## IC-M430 VHF MARINE TRANSCEIVER

The IC-M430 is a stylish and compact radio with essential features.

- New flush mount method
- Slimmer body and sleek design
- NMEA 2000™ and NMEA 0183-HS connectivity
- Color TFT LCD with wide viewing angle
- Three display modes (Day mode, Dark mode, and Night mode) and more

SKU # 004234 **INSTORE SPECIAL**



NEW FOR 2026

## MA-600TRBB CLASS B + AIS TRANSPONDER

Black box AIS Transponder to broadcast your presence.

- Class B + AIS transponder with SOTDMA and 5 watts transmit power
  - Silent Mode to pause the AIS transmission
  - Built-in antenna splitter to share a single VHF antenna with a marine radio
  - NMEA 2000™ and NMEA 0183-HS connectivity and more
- SKU # 004236

**INSTORE SPECIAL**



**STANDARD HORIZON**

**HX891BT - 6 Watt Handheld VHF/GPS/Bluetooth**

- Integrated GPS with Full DSC capabilities
- Bluetooth for handsfree VHF operation
- 6W transmit power output
- 700mW Loud Audio & Noise Canceling



HX891BK **Black** SKU 033426 **Sale \$349.99**  
 HX891NB **Navy Blue** SKU 033427 **Sale \$349.99**

**GX1410 Eclipse VHF Radio**

- ITU-R M.493-13 Class D DSC
- Separate Receiver for CH70
- Ultra-Compact Case



**NEW FOR 2026**

GX1410B **Black** SKU 033414 **Sale \$239.99**  
 GX1410W **White** SKU 033415 **Sale \$239.99**

**GX1850 Explorer VHF Radio with GPS**

- ITU-R M.493-13 Class D DSC
- Separate Receiver for CH70
- Ultra-slim rear case (3.3" Deep)
- NMEA 0183 Connectivity



**NEW FOR 2026**

GX1850B **Black** SKU 033424 **Sale \$369.99**  
 GX1850W **White** SKU 033425 **Sale \$369.99**

**3-YEAR WATERPROOF WARRANTY**



**em-trak**

**EM-TRAK AIS TRANSCEIVER**

- **B 923 Standard Power 2W, VHF Antenna Splitter** SKU 008803 **Sale \$1,149.99** MAP
- **B 953 High Power 5W, VHF Antenna Splitter** SKU 008809 **Sale \$1,327.99** MAP
- **B 954 High Power 5W, VHF Antenna Splitter, WiFi & Bluetooth for streaming AIS data to smartphones & tablets** SKU 008806 **Sale \$1,827.99** MAP



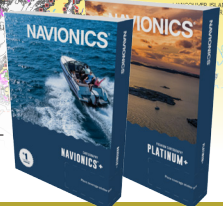
**MADE IN IRELAND**

➤ **304-0055 GPS Antenna** SKU 008808 **Sale \$94.99**

**NAVIONICS**  
A Garmin Brand

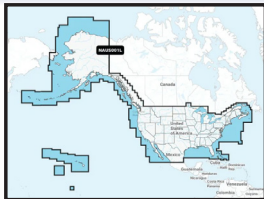
**NAVIONICS®+ AND NAVIONICS PLATINUM+™ CARTOGRAPHY**

Get the world's No. 1 choice in marine mapping with the best, most up-to-date Navionics+ cartography on your compatible chartplotter. For offshore or inland waters, this all-in-one solution offers detail-rich integrated mapping of coastal waters, lakes, rivers and more.



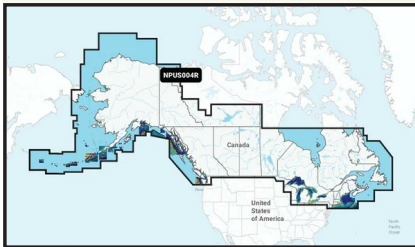
**NAVIONICS®**

**U.S. & Coastal Canada - Lakes, Rivers and Coastal Marine Charts**  
 Navionics®+ | NAUS001L | microSD™/SD™ and One-year Subscription.  
 PN# 010-C1366-30 SKU 007142 Reg \$289.99 **Sale \$269.99**



**Canada, West & Alaska - Lakes, Rivers and Coastal Marine Charts**  
 Navionics®+ | NAUS013R | microSD™/SD™ and One-year Subscription.  
 PN# 010-C1467-30 SKU 007143 Reg \$217.99 **Sale \$199.99**

**NAVIONICS PLATINUM+™**



**Canada, West & Alaska - Lakes, Rivers and Coastal Marine Charts**  
 Navionics Platinum+™ | NPUS013R | microSD™/SD™ and One-year Subscription.  
 PN# 010-1467-40 SKU 007144 Reg \$362.99 **Sale \$329.99**

**IN-STORE  
SPECIALS**



# Fishing Centre



**SHIMANO**



## DOWNRIGGERS



**SCOTTY DOWNRIGGER  
2106B HD**  
30-60 Electric Braided Line  
SKU 145250  
**Instore Specials**



**SCOTTY ELECTRIC  
TRAP HAULER 2500**  
SKU 145255  
**Instore Specials**

## REELS



## RODS



## CRAB TRAPS, PRAWN TRAPS & BAIT

**OTHER  
MODELS  
AVAILABLE**



**GARMIN**

**TROLLING MOTORS**

**FORCE® KRAKEN TROLLING MOTOR**

Engineered with a longer shaft for boats with high freeboards and a pivot-style mount for easy installation in vessels where bow space is limited.

Colour: **White** Length: **48"** PART # 010-02574-30  
SKU #606427 \$5,519<sup>99</sup>MAP

Colour: **White** Length: **63"** PART # 010-02574-00  
SKU #606419 \$5,659<sup>99</sup>MAP

Colour: **White** Length: **75"** PART # 010-02574-10  
SKU #606420 \$5,949<sup>99</sup>MAP

Colour: **White** Length: **90"** PART # 010-02574-20  
SKU #606421 \$6,239<sup>99</sup>MAP

Colour: **White** Length: **110" with Remote Control**  
PART # 010-02574-40 SKU #606417 \$9,099<sup>99</sup>MAP

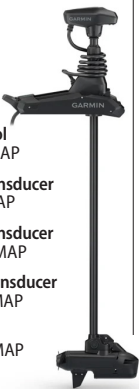
Colour: **Black** Length: **48" with GT56UHD-TR Transducer**  
PART # 010-02573-30 SKU #606426 \$5,219<sup>99</sup>MAP

Colour: **Black** Length: **63" with GT56UHD-TR Transducer**  
PART # 010-02573-00 SKU #606422 \$5,369<sup>99</sup>MAP

Colour: **Black** Length: **75" with GT56UHD-TR Transducer**  
PART # 010-02573-10 SKU #606423 \$5,659<sup>99</sup>MAP

Colour: **Black** Length: **90" with Remote Control**  
PART # 010-02573-20 SKU #606415 \$6,239<sup>99</sup>MAP

Colour: **Black** Length: **110" with Remote Control**  
PART # 010-02573-40 SKU #606416 \$9,099<sup>99</sup>MAP



**FORCE® PRO TROLLING MOTOR**

Move fast, move quiet with the Force Pro trolling motor — engineered with a powerful motor and our most precise positioning technology. • Improved anchor lock via superior accuracy multi-band gps • 100 lbs of thrust • Wireless controls; integrates with garmin chartplotters

Colour: **Black** Length: **50"** with Built-In  
GT56UHD-TR Transducer PART # 010-03011-00  
SKU #606430 \$5,799<sup>99</sup>MAP

Colour: **Black** Length: **57"** with Built-In  
GT56UHD-TR Transducer PART # 010-03011-10  
SKU #606431 \$5,999<sup>99</sup>MAP



**FORCE® CURRENT**

Engineered for kayak anglers, wireless integration, and wireless throttle and steering control.

**Force® Current** Kayak Trolling Motor  
PART # 010-02864-10  
SKU #606413 \$4,199<sup>99</sup>MAP

**Force® Current** with Power Steer Foot Pedals  
Kayak Trolling Motor PART # 010-02864-00  
SKU #606414 \$4,999<sup>99</sup>MAP



**NEW FOR 2026**

**rescueME PLB1**

The world's most compact Personal Locator Beacon

- 7 year battery life
- 7 year Warranty
- 406 Mhz satellite link
- 66 Channel GPS Receiver

SKU #005966



**GOOD FOR LAND & SEA**

**rescueME MOB1**

The world's smallest AIS Man Over Board personal locator device

- AIS – Automatic Identification System
  - Integral DSC transmitter
  - 7 year battery life
  - 24+ Hours battery life
- 7405-01551 MOB complete with Flotation Pouch  
SKU #005967



**MADE IN BRITAIN**

\*\*\* CALL FOR PRICING \*\*\*

**ocean SIGNAL**



**AIS & PLB Combo**

**GlobalFix**

EPIRB with the addition of an AIS alert provides the easiest and quickest path to rescue while the included Return Link Service (RLS) functionality provides a sense of security by providing direct to beacon confirmation that your distress message has been received.

NFC capability.  
(Programmed Canada)

- GlobalFix V5 Cat I**  
SKU 029848 \$1,640<sup>99</sup>MAP
- GlobalFix V5 Cat II**  
SKU 029849 1,415<sup>99</sup>MAP
- GlobalFix V6 CAT I**  
SKU 029850 1,324<sup>99</sup>MAP
- GlobalFix V6 CAT II**  
SKU 029851 1,149<sup>99</sup>MAP

**ResQLink™ AIS**

The all new ACR ResQLink AIS Personal Locator Beacon (PLB) contains both satellite and local transponders. With the introduction of Automatic Identification System (AIS) functionality, Return Link Service (RLS) technology.  
SKU 029852  
\$951<sup>99</sup>MAP

## INFLATABLE BOATS



## AIR DECK

**180**

PERSONS: 1.5 • MAX HP: 2.5 • LENGTH: 5.9 ft.  
SKU 631102 **SALE \$989<sup>99</sup>**

**200**

PERSONS: 2 • MAX HP: 4 • LENGTH: 6.5 ft.  
SKU 631103 **SALE \$1,086<sup>99</sup>**

**230**

PERSONS: 3 • MAX HP: 5 • LENGTH: 7.5 ft.  
SKU 631104 **SALE \$1,193<sup>99</sup>**

**260**

PERSONS: 3 • MAX HP: 5.26 • LENGTH: 8.5 ft.  
SKU 631105 **SALE \$1,244<sup>99</sup>**

**270**

PERSONS: 3.5 • MAX HP: 5.9 • LENGTH: 8.8 ft.  
SKU 631106 **SALE \$1,293<sup>99</sup>**

## SLATTED FLOOR

**SL 180**

PERSONS: 2 • MAX HP: 2.5 HP • LENGTH: 5.9 ft.  
SKU 631107 **SALE \$879<sup>99</sup>**

**SL 210**

PERSONS: 2 • MAX HP: 4 HP • LENGTH: 6.8 ft.  
SKU 631108 **SALE \$932<sup>99</sup>**

**SL 240**

PERSONS: 2 • MAX HP: 4 HP • LENGTH: 7.8 ft.  
SKU 631109 **SALE \$1,159<sup>99</sup>**



# Crewsaver®

ISO Crewsaver  
Life Raft

## LIFE RAFTS

**4 PERSON ISO CREWSAVER VALISE**

Less than 24 Hour service pack  
SKU 631090 **\$2,630<sup>99</sup>**

Greater than 24 Hour service pack  
SKU 631115 **\$2,842<sup>99</sup>**

**6 PERSON ISO CREWSAVER LPC**

Less than 24 Hour service pack  
SKU 631087 **\$2,952<sup>99</sup>**

Greater than 24 Hour service pack  
SKU 631101 **\$3,135<sup>99</sup>**

**8 PERSON ISO Crewsaver LPC**

Less than 24 Hour service pack  
SKU 631088 **\$3,205<sup>99</sup>**

Greater than 24 Hour service pack  
SKU 631110 **\$3,411<sup>99</sup>**

**4 PERSON MARINER VALISE**

SKU 631097 **\$2,096<sup>99</sup>**

**6 PERSON MARINER LPC**

SKU 631095 **\$2,394<sup>99</sup>**

All models come with a 3 year service interval



Mariner Life Raft



LPC case



Valise case



ISO Crewsaver  
Life Raft

# TORQUEEDO

## TRAVEL PACKAGES

### 5 HP XP POWER PACKAGE

1,600w Motor With 1,425wh Battery  
**IDEAL FOR BOATS UP TO 2 TONS**

Short Shaft Tiller \$4,398.<sup>00</sup> USD MAP  
 Motor SKU # 198607, Battery SKU # 198612

Short Shaft Remote \$4,498.<sup>00</sup> USD MAP  
 Motor SKU # 198609, Battery SKU # 198612

Long Shaft Tiller \$4,448.<sup>00</sup> USD MAP  
 Motor SKU # 198608, Battery SKU # 198612

Long Shaft Remote \$4,548.<sup>00</sup> USD MAP  
 Motor SKU # 198610  
 Battery SKU # 198612

Extra Battery SKU # 198612 \$1,899.<sup>00</sup> USD MAP

### 3 HP ESSENTIAL PACKAGE

1,100w Motor With 1,080wh Battery  
**IDEAL FOR TENDERS  
 UP TO 1.5 TONS**

Short Shaft Tiller \$3,398.<sup>00</sup> USD MAP  
 Motor SKU # 198605  
 Battery SKU # 198611

Long Shaft Tiller \$3,448.<sup>00</sup> USD MAP  
 Motor SKU # 198606  
 Battery SKU # 198611

Extra Battery SKU # 198611  
 \$1,599.<sup>00</sup> USD MAP

### 3 HP RANGE PACKAGE

1,100w Motor With 1,425wh  
**Battery Upgrade**

**IDEAL FOR EXTENDED RUNTIME**

Short Shaft Tiller \$3,698.<sup>00</sup> USD MAP  
 Motor SKU # 198605  
 Battery SKU # 198612

Long Shaft Tiller \$3,748.<sup>00</sup> USD MAP  
 Motor SKU # 198606  
 Battery SKU # 198612

Extra Battery  
 SKU # 198612  
 \$1,899.<sup>00</sup>  
 USD MAP



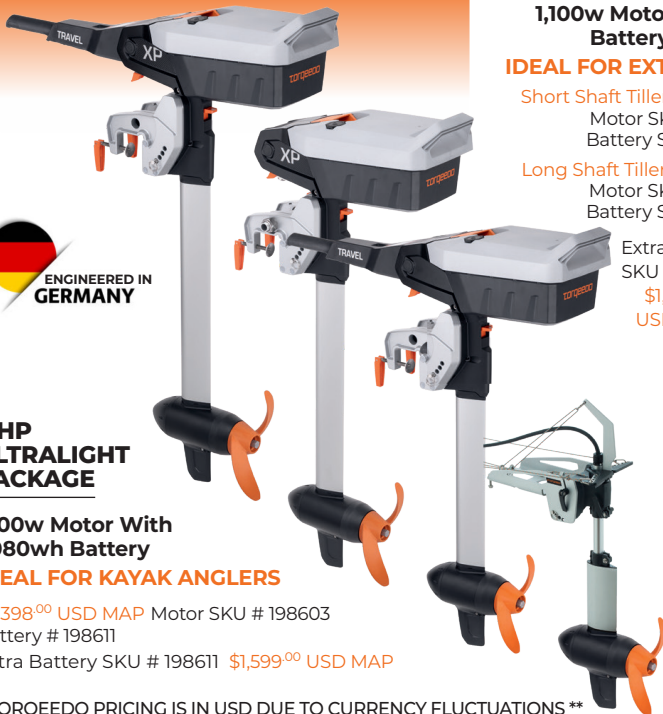
### 3 HP ULTRALIGHT PACKAGE

1,100w Motor With  
 1,080wh Battery

**IDEAL FOR KAYAK ANGLERS**

\$3,398.<sup>00</sup> USD MAP Motor SKU # 198603  
 Battery # 198611

Extra Battery SKU # 198611 \$1,599.<sup>00</sup> USD MAP



\*\* TORQUEEDO PRICING IS IN USD DUE TO CURRENCY FLUCTUATIONS \*\*

## CRUISE SERIES

PROVEN, RELIABLE, 48V ELECTRIC DRIVES FOR SAILING AND MOTORBOATS

**Cruise 3.0** - boats up to 3 tons. **Cruise 6.0** - boats up to 6 tons.

**Cruise 12.0** - boats up to 12 tons.

### CRUISE 3.0

#### 3,000W motor / 6 HP

3.0 RS (48V) SKU # 198670  
\$4,698.00 USD MAP

3.0 RL (48V) SKU # 198671  
\$4,798.00 USD MAP

3.0 TS (48V) SKU # 198672  
\$4,748.00 USD MAP

3.0 TL (48V) SKU # 198673  
\$4,848.00 USD MAP

NEW  
FOR  
2026



### CRUISE 6.0

#### 6,000W motor / 9.9 HP

6.0 RS (48V) SKU # 198674  
\$5,448.00 USD MAP

6.0 RL (48V) SKU # 198675  
\$5,548.00 USD MAP

6.0 TS (48V) SKU # 198676  
\$5,498.00 USD MAP

6.0 TL (48V) SKU # 198677  
\$5,598.00 USD MAP

NEW  
FOR  
2026



### CRUISE 12.0

#### 12,000W motor / 25 HP

(2 banks recommended)

12.0 RL TORQLINK SKU # 149127  
\$12,999.00 USD MAP

12.0 RS TORQLINK SKU # 149128  
\$12,499.00 USD MAP

12.0 RXL TORQLINK SKU # 149129  
\$13,499.00 USD MAP



### CRUISE 3.0

#### 3,000W motor / 6HP

Fixed Pod  
\$4,999.00  
USD MAP

3.0 FP TQ BUS  
SKU # 149145



### CRUISE 6.0

#### 6,000W motor / 9.9 HP

Fixed Pod  
\$5,699.00  
USD MAP

6.0 FP TORQLINK  
SKU # 149139



### CRUISE 12.0

#### 12,000W motor / 25 HP

(2 banks recommended)

Fixed Pod  
\$13,999.00  
USD MAP

12.0 FP TORQLINK  
SKU # 149130

## LITHIUM-ION POWER BATTERY SERIES

#### Power 48-5000

SKU #149121  
\$5,199.00 USD



#### TorqLink Throttle With color display

SKU #149762  
\$399.99 USD MAP



PLEASE SEE STEVESTONMARINE.COM OR CALL FOR CANADIAN PRICING



The Brightest Name in Safety

# HAND HELD RED SIGNAL FLARES

SingleSKU # 064792 Reg. \$25<sup>99</sup> Sale \$21<sup>99</sup>



# 12-GAUGE BASIC KIT 6

SKU #064769

Reg. \$199<sup>99</sup> Sale \$169<sup>99</sup>



Steveston is an authorized C-I-L/ORION  
MARINE FLARE RECYCLE CENTRE

## SUPER-6 & SUPER-12 KITS

- NEW kits for larger boats
- Packed in a floatable & waterproof bag
- Includes aerial & hand held flares for increased visibility

### SUPER-12 LARGE BOAT KIT (OVER 29' FEET

)SUPER 12 KIT SKU #066966

Reg. \$449<sup>99</sup> Sale \$379<sup>99</sup>



**\$10**  
CONSUMER  
REBATE

### SUPER-6 SMALL BOAT KIT (UNDER 29' FEET

)SUPER 6 KIT SKU #066975

Reg. \$269<sup>99</sup> Sale \$219<sup>99</sup>



**\$5**  
CONSUMER  
REBATE

**ONLY CIL PRODUCTS ACCEPTED FOR RECYCLING**  
(Valid until the end of August 2026)



# LEWMAR®

Made in Britain

## ANCHORED IN EXCELLENCE

Lewmar® Sets the Standard for Powerful Anchoring Systems

### V700

(No Rope Capstan)

1/4" Chain G4

1/2 Proset Rope

SKU 010517

**\$1,649.99**

### Lewmar Windlasses

Revolutionize your anchoring experience with Lewmar windlasses — one touch moves your rode chain or all-chain anchor lines effortlessly.

### Lewmar Anchors

Forged from premium 316 stainless steel, Lewmar's precision-crafted anchors offer unmatched durability.

lewmar.com

Rocna.com

- Quick sets across a wide range of bottom types
- Rock solid holding power
- Resistant to wind and tide shifts
- Self-launching
- Guaranteed for life

**ROCNA**  
ANCHORS // ROCK SOLID

**IN-STORE SPECIALS**

**ROCNA**  
ORIGINAL

**VULCAN**

**ROCNA**  
MK11

- Patented roll-foil for most reliable set
- Toughest Rocna shank of all
- Improved fluke for boost in holding power

Model	Weight	SKU#
<a href="#">ROCNA 4</a>	9 lb	098900
<a href="#">ROCNA 6</a>	13 lb	098901
<a href="#">ROCNA 10</a>	22 lb	098902
<a href="#">ROCNA 15</a>	33 lb	098903
<a href="#">ROCNA 20</a>	44 lb	098904
<a href="#">ROCNA 25</a>	55 lb	098905
<a href="#">ROCNA 33</a>	73 lb	098906
<a href="#">ROCNA 40</a>	88 lb	098907
<a href="#">ROCNA 55</a>	121 lb	098908
<a href="#">ROCNA 70</a>	154 lb	098909
<a href="#">ROCNA 110</a>	242 lb	098910
<a href="#">ROCNA 150</a>	330 lb	098911
<a href="#">ROCNA 200</a>	440 lb	098912
<a href="#">ROCNA 275</a>	605 lb	098913

**VULCAN**

Model	Weight	SKU#
<a href="#">VLC4GS</a>	9 lb	098940
<a href="#">VLC6GS</a>	13 lb	098941
<a href="#">VLC9GS</a>	20 lb	098942
<a href="#">VLC12GS</a>	26 lb	098943
<a href="#">VLC15GS</a>	33 lb	098944
<a href="#">VLC20GS</a>	44 lb	098945
<a href="#">VLC25GS</a>	55 lb	098946
<a href="#">VLC33GS</a>	73 lb	098947

**ROCNA MK11**

Model	Weight	SKU#
<a href="#">RM2004GS</a>	9LB	098975
<a href="#">RM2006GS</a>	13LB	098976
<a href="#">RM2009GS</a>	20LB	098972
<a href="#">RM2012GS</a>	27LB	098973
<a href="#">RM2015GS</a>	33LB	098974
<a href="#">RM2020GS</a>	44LB	098977
<a href="#">RM2025GS</a>	55LB	098978
<a href="#">RM2033GS</a>	73LB	098979
<a href="#">RM2040GS</a>	88LB	098980

# LEWMAR®

## PRO-SERIES HORIZONTAL WINDLASS KIT

- Powerful motor / fast line speed
- Manual emergency recovery equipped
- Strong 100% 316 stainless housing
- Automatic freefall (ProFish model only)
- Max pull: 700 lbs. (Pro 700) / 1000 lbs. (Pro 1000)

**Pro 700 1/4" Gypsy** 6656011967310  
SKU #017812 **Sale \$1,899<sup>99</sup>**

**Pro 1000 1/4" Gypsy** 6657011967311  
SKU #002803 **Sale \$2,199<sup>99</sup>**

**Pro 1000 5/16" Gypsy** 6657011108102  
SKU #002791 **Sale \$2,199<sup>99</sup>**

**ProFish 700 1/4" Gypsy** 6656211967310  
SKU #010525 **Sale \$2,179<sup>99</sup>**

**ProFish 1000 5/16" Gypsy**  
6656411108102  
SKU #010526  
**Sale \$2,369<sup>99</sup>**



# ANDERSEN

## MANUAL SELF-TAILING WINCHES

**HOT PRICES**

### Andersen Power Rib

- Prevents rope over-rides
- Increases grip on rope
- Reduces rope wear

**12ST** SKU 048310  
**18ST** SKU 048311  
**28ST** SKU 048312  
**34ST** SKU 048312  
**40ST** SKU 048317



- The Electric Winch Handle Cheaper than a single electric winch.
- Provides full assistance to all of your winches

**Ewincher SE White & Black**  
Sku 649257 **Sale \$2,439<sup>99</sup>**

**Ewincher 2 White & Black**  
Sku 649256 **Sale \$2,899<sup>99</sup>**



# Lofrans®

WINDLASSES

Made in ITALY



## RAZZA

Compact Horizontal Windlass, 500 / 800 W  
For boats up to 35'

**#LO-RAZZA-5 500W**  
SKU 048690 **\$1,899<sup>99</sup>**

**#LO-RAZZA-8 800W**  
SKU 048689 **\$1,999<sup>99</sup>**

## X2

1,000W Windlass, For boats 30' to 45'

**#LO-PX2L10125 Lo Profile**  
Sku 048605 **Sale \$2,199<sup>99</sup>**

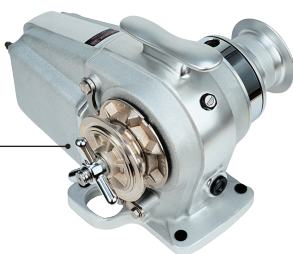
**#LO-PX2C10125 WITH Capstan**  
SKU 094668 **Sale \$2,495<sup>99</sup>**



## TIGRES

1,500 W Windlass, For boats up to 59'

**#LO-TIGRES-12**  
SKU 048548 **Sale \$2,899<sup>99</sup>**



**Tigres Rope/ chain gypsy kit**  
SKU 636566 Reg. 869<sup>99</sup>  
**Sale 599<sup>99</sup>**



# POWER YOUR ADVENTURE WITH SEA-DOG MARINE ELECTRICAL

## Cable Management

Confidence in Every Connection

- Keep your system **safe, reliable & long-lasting**
- Components to meet ABYC E-11 Marine Standard systems
- Protects wiring from **chafing, vibration & damage**
- Everything you need: **heat shrink, ties, lugs, clamps, wrap & loom**

## Sea-Dog Marine Wire™

Built to Endure the Harshes Marine Environments

- Fights corrosion with **tinned stranded copper**
- **Ultra-flexible** for vibration-prone environments
- Rated for **600 volts AC** shore power systems and DC battery setups
- Withstands extreme temps: **-40°C to 105°C**
- **Saltwater, oil, acid & UV resistant jacket**
- Proudly **Made in the USA** & all ABYC compliant colors

## Circuit Protection

Trust in Total Protection

- **Thermal circuit breakers** stop overloads before they stop you
- High-amp resettable options + **battery disconnect combo**
- Easy-to-see trip indicators
- Surface & panel mount choices
- **Ignition protected** to SAE standards
- **UL listed & Made in the USA** (select models)
- **IP66/IP67 rated** for rugged marine conditions



View the full range of Sea-Dog Marine Electrical

Scan for more info



SEA-DOG.COM



# Smooth Secure Silent

**NEW**  
Ultra-smooth  
soft-close action  
with patent-pending  
Teflon-coated pin

**Durable**  
Corrosion-  
resistant 304  
stainless steel



**Anti-rattle**  
Precise, low-friction  
movement for  
minimal rattle

## THE ULTIMATE MARINE-GRADE DAMPENING HINGES

We're expanding our popular hinge lineup with a range featuring an all-new patent-pending slow-close mechanism to provide an extra-premium feel.

Available in a variety of styles and sizes for both interior and exterior applications.



**DAMPENING BUTT HINGE**  
203070..... 1-1/4" x 1-1/2"  
203071..... 1-1/4" x 1-1/2"  
203072..... 1-1/4" x 1-1/2"



**DAMPENING BUTT HINGE**  
203080..... 2" x 3"  
203081..... 3" x 3"



**DAMPENING SHORT SIDE DOOR HINGE**  
203510..... 2-1/4" x 1-1/2"



**DAMPENING OFFSET SHORT SIDE DOOR HINGE**  
203512..... 2-1/8" x 1-1/2"



**DAMPENING DOOR HINGE**  
203530..... 2-7/8" x 1-1/2"



**DAMPENING ROUND SIDE DOOR HINGE - SHORT**  
203700..... 2-13/16" x 1-1/2"

SEA-DOG.COM

# xylem

Let's Solve Water

**20% OFF**  
LIST PRICES



## PUMPS



### HOTSHOT 3

12V 3GPM 50PSI 32305-5012-3A  
SKU #027181

### HOTSHOT HD4

12V 4GPM 60PSI Q401J-118N-3A  
SKU #027182

### HOTSHOT HD5

12V 5GPM 70PSI P501J-119N-3A  
SKU #027183

### HOTSHOT HD6

12V 6GPM 70PSI P601J-219N-3A  
SKU #027184

**PARMAX 2**  
12V 2GPM 35PSI 12V  
31295-3512-3A SKU #027187

**PARMAX 3**  
12V 3GPM 40PSI 12V  
31395-4012-3A SKU #027188

**PARMAX HD4**  
12V 4GPM 40PSI  
12V Q401J-1155-3A SKU #027190

**PARMAX HD4**  
12V 4GPM 60PSI 12V  
Q401J-1185-3A SKU #176803

**PARMAX HD6**  
12V 6GPM 40PSI  
12V P601J-2155-3A SKU # 027193

**PARMAX HD6**  
12V 6GPM 60PSI  
P601J-2185-3A SKU #027194



### HOTSHOT HD4 KIT

12V 4GPM 60PSI KIT  
Q401J-118N-4A  
SKU #027185

### HOTSHOT HD6 KIT

12V 6GPM 70PSI KIT  
P601J-219N-4A  
SKU #027186

## BILGE PUMPS



### RULE-MATE SUBMERSIBLE BILGE PUMP

500GPH Auto SKU #051025  
800GPH Auto SKU #051057  
1100GPH Auto SKU #061942



### RULE LOPRO SUBMERSIBLE PUMP

LP900D 900GPH Manual  
SKU #062058  
LP900S 900GPH Auto  
SKU #062074



### 24DA RULE 360 SUBMERSIBLE

24DA 360GPH  
SKU #061978



### 35A RULE-A-MATIC FLOAT SWITCH

35A SKU #061983

## TOILETS



**MACERATOR PUMP**  
18590-2092 SKU  
#041961



**MANUAL 'TWIST N'  
LOCK' TOILET**  
29090-5000  
SKU #041914



**TOILET 12V -  
COMPACT BOWL**  
37010-3092  
SKU #057144



**LITE FLUSH 12V -  
WITH FOOT SWITCH**  
58500-0012  
SKU #041905





**victron energy**

BLUE POWER  
ENERGY. ANYTIME. ANYWHERE

**ALL  
ITEMS ON  
SALE**



**Orion-XS Smart DC-DC charger**

12-12/30Amp Non Isolated - SKU 602984 \$293<sup>99</sup><sub>MAP</sub>  
12-12/50Amp Non Isolated - SKU 936301 \$424<sup>99</sup><sub>MAP</sub>  
**NEW FOR 2026 - 12/12-50Amp, 1400**  
(dual voltage: 12 & 24V) SKU 446449 \$486<sup>99</sup><sub>MAP</sub>



**NEW  
LOWER  
PRICING FOR  
2026**

**LiFePO4 Lithium Batteries NG**  
12.8V/100Ah NG SKU 094960  
12.8V/200Ah NG SKU 094961  
12.8V/300Ah NG SKU 602993

**Smart LiFePO4 Lithium Battery**

12.8V / 100Ah SKU 936080  
12.8V / 180Ah SKU 094915  
12.8V / 200Ah SKU 936082

**CALL FOR PRICING**

LiFePO4 Batteries require an external BMS



**Lynx Smart BMS**

NG500 SKU 094965 \$931<sup>99</sup><sub>MAP</sub>

**VE.Bus BMS V2**

SKU 602997 \$201<sup>99</sup><sub>MAP</sub>

Specify BMS for NG or Smart Series



**Smart Solar Charge Controller**

MPPT 75/15 - SKU 040285 \$87<sup>99</sup><sub>MAP</sub>  
MPPT 100/20 - SKU 936122 \$121<sup>99</sup><sub>MAP</sub>  
MPPT 100/30 - SKU 602988 \$175<sup>99</sup><sub>MAP</sub>  
MPPT 100/50 - SKU 936123 \$251<sup>99</sup><sub>MAP</sub>



**MultiPlus**

12V/500/20-16

SKU 094959

\$380<sup>99</sup><sub>MAP</sub>

12V/800/35-16

SKU 094957

\$490<sup>99</sup><sub>MAP</sub>

12V/1200/50-16

SKU 935411

\$599<sup>99</sup><sub>MAP</sub>



**Cerbo GX Mk II**

SKU 094949 \$338<sup>99</sup><sub>MAP</sub>



**Blue Smart IP65 Charger**

12V/5A SKU 094925 \$116<sup>99</sup><sub>MAP</sub>

12V/15A SKU 094926 \$197<sup>99</sup><sub>MAP</sub>



**MultiPlus Combined  
Inverter & Charger**

12V/3000/120-50 120V

SKU 602985 \$1,240<sup>99</sup><sub>MAP</sub>

24V/3000/70-50 120V

SKU 602987 \$1,361<sup>99</sup><sub>MAP</sub>

**dickinson**  
MARINE



**TRUSTED ON THE WATER SINCE 1932**

**Reliable heat and cooking wherever your journey takes you**



**IN-STORE  
SPECIALS**

**STAINLESS BBQS - STOVES - HEATERS**

**www.dickinsonmarine.com**



# NOVA KOOL





MOBILE REFRIGERATION

Reliable. Efficient. Built for the Road & Water.



Proudly Made in BC, Canada since 1970



-  Low power draw (as low as 2.2.2 amps)
-  Built for RV & Marine use
-  Proven reliability — "Bulletproof" performance
-  Direct replacement for leading brands

Thank You Steveston Marine for 40 Great Years of Partnership



Proudly Made in BC, Canada since 1970  
www.novakool.com

Explore the Full Lineup  
www.novakool.com



## Interlux

ANTIFOULING, BOAT PAINT, YACHT VARNISH & MORE



**Toplac Plus**

Perish Quality, High Gloss, Durable Yacht Grade

**IN STORE SPECIAL**



**Micron CSC**



**Bottomkote**



**SuperProtect 2000E**



## KiwiGrip

Non-Skid Deck Systems

**Anti-Slip Deck Coat 1L**  
Sale \$95<sup>99</sup>

**Anti-Slip Deck Coat 4L**  
Sale \$295<sup>99</sup>



**MADE IN FRANCE**



**KiwiGrip**  
KiwiGrip Non-Skid System  
Système KiwiGrip - Peinture de pont antidérapante  
Traction Made Beautiful

**DON'T LET CORROSION EAT YOUR INVESTMENT**



**MDX SHAFT ANODES**



**MDE ENGINE ANODES**

**15 TO 25% OFF**



**DM-DD6X12 DIVER HEAVY**



**DM GROUPEUR ANODE**



METAL DISTRIBUTORS LTD

**reliance**



**DOCK EDGE<sup>+</sup>**

Your Dock • Your Way

**PROTECT WHAT MATTERS.**

Dock Edge+ twin-eye fenders are built to absorb impact and defend your vessel from scuffs, scrapes, and costly damage.

- Horizontal or vertical use
- Reinforced ribbed rope holds
- Even wall thickness for maximum durability
- Secure vinyl valve

**5.5x20 Fender 2 Pack, white with fender line**  
SKU 090142 **Sale \$49<sup>99</sup>**

**6.5x23 Fender 2 Pack, white with fender line**  
SKU 090145 **Sale \$54<sup>99</sup>**

**TRUDESIGN<sup>®</sup>**

**Glass Reinforced Nylon Composite**



- High Strength / Light Weight
- Less Expensive than Bronze
- No Corrosion or Electrolysis
- Chemical & Fire Resistant

**10% OFF**



**Ball Valves**



**Thru Hulls**



**Hose Barbs**



**Load Bearing Collars**

**SIERRA<sup>®</sup>**



**30A**  
**50 FOOT CORDSET**  
125V

AC12360 - SKU 012360

Reg. \$259<sup>99</sup>

**Sale \$189<sup>99</sup>**

**50A**  
**50 FOOT CORDSET**  
125/250V

AC12380 - SKU 012380

Reg. \$1,259<sup>99</sup>

**Sale \$989<sup>99</sup>**

**Limited Quantities**



- Dockside power indicator LED
- Nickel-plated brass contacts
- Watertight plug assembly



# PLASTIMO

## SLR 196 INFLATABLE LIFEJACKET



**SPECIAL ORDER ITEM**

SKU 038015

Reg. \$549.00  
**SALE \$439.99**



# August Race

## RIB CLEANER / PROTECTOR KIT



SKU 038016

Reg. \$69.99  
**SALE \$59.99**



# JOBEI SEASCOOTER

**SPECIAL ORDER ITEM**



Reg. \$1499.00  
**SALE \$1129.99**

SKU 038017



Get compliments  
without fishing  
or them.

15%  
OFF

IN-STORE ITEMS ONLY



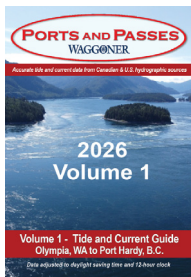
GO *Show*  
BOATING

**SHURHOLD.**  
Find your Shine

## PORTS AND PASSES

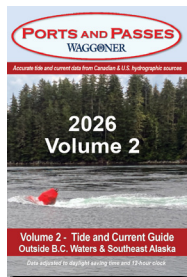
THE PACIFIC NORTHWEST TIDE AND CURRENT GUIDE

Ports and Passes includes accurate tidal station predictions, secondary stations, and helpful information for planning your passages in 2026.



**Volume 1** covers the Inside marine waters from Olympia, WA to Port Hardy, BC.

SKU #600629  
Sale \$36<sup>99</sup>



**Volume 2** covers West Juan de Fuca, West Coast Vancouver Island, Northern BC, Haida Gwaii, and Southeast Alaska.

SKU #600628  
Sale \$34<sup>99</sup>

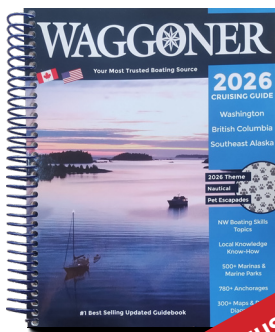
## WAGGONER CRUISING GUIDE

YOUR MOST TRUSTED NORTHWEST BOATING GUIDE

Waggoner Cruising Guide is the number one purchased guidebook by recreational boaters seeking detailed information about marinas, anchorages, and waterways of the Pacific Northwest. Boaters will find over 300 maps and dock diagrams for easy reference; descriptions and amenities for over 500 marinas and marine parks; and over 780 best anchorages. The Waggoner Cruising Guide is updated and published annually covering the marine

waters of British Columbia, Southeast Alaska, and Washington State.

SKU #630299  
Reg. \$63<sup>90</sup>  
Sale \$54<sup>99</sup>



**MUST HAVE ONBOARD  
GUIDE BOOKS**



From inshore to open ocean, recreation to professional rescue — generations of boaters, anglers, and paddlers have trusted us to shield them from the harshest environments and deliver peace of mind that everyone comes home safe.

We're here to protect the lives of those who #livebeyondland.  
mustangsurvival.com



reddot winner 2024



## ATLAS 190 DLX HYDROSTATIC INFLATABLE LIFE JACKET

Model #: MD3195E1

Approval: ISO 150N (12402-3)

Size: Adult Universal

- 188N / 42 lbs of buoyancy.
- Hammar Hydrostatic Inflator prevents accidental inflation.
- Ergonomically shaped to sit off the neck and provide all-day comfort.
- ADAPT technology incorporates bladder contouring that provides strong turning performance.
- Low-profile tether point allows users to attach to jack lines.
- Integrated leg strap is detachable.
- Lightweight anodized aluminum hardware provides durability and security.
- Integrated sprayhood prevents secondary drowning.
- Water-activated light increases on the water visibility.
- Room for AIS and PLB storage.



### ELITE 190 PFD

Model #: MD3170

Approval: Harmonized Level 70 (USCG / TC Approved)

Size: Adult Universal

- 188N / 42 lbs of buoyancy.
- Hammar Hydrostatic Inflator prevents accidental inflation.
- Ergonomically shaped to sit off the neck and provide all-day comfort.
- ADAPT technology incorporates bladder contouring that provides strong turning performance.
- Engine kill switch loop.
- Room for AIS/PLB storage.



### ELITE 120 PFD

Model #: MD5170

Approval: Harmonized Level 70 (USCG / TC Approved)

Size: Adult Universal

- 120N / 28 lbs of buoyancy.
- Hammar Hydrostatic Inflator prevents accidental inflation.
- Ergonomically shaped to sit off the neck and provide all-day comfort.
- ADAPT technology incorporates bladder contouring that provides strong turning performance.
- Engine kill switch loop.
- Mesh back for comfort and breathability.



### MIT 100 CONVERTIBLE A/M INFLATABLE PFD

**Model #:** MD2040

**Approval:** TC Approved (Type III Performance)

**Size:** Adult Universal

- Convert between automatic and manual-only inflation modes by simply swapping inflator caps (included).
- 28 lbs of buoyancy when inflated.
- Exclusive Membrane Inflatable Technology™ creates a lightweight and flexible fit.
- High tenacity nylon face fabric is supple and durable.
- 1-fold design is easy to repack.
- Indicator window makes inflator inspection simple and easy.



### MINIMALIST MANUAL INFLATABLE BELT PACK

**Model #:** MD3070

**Approval:** Harmonized Level 70 (USCG / TC Approved)

**Size:** Adult Universal

- Lightweight ergonomic fit.
- Inflates via manual inflation cord.
- Minimalist design stays out of the way until activated.
- Molle webbing for securing essentials.
- Provides 16.9 LBS (75N) of buoyancy when inflated.

## MEN'S & WOMEN'S PADDLING VESTS

**APF Foam Vest**  
MV4111



**Solaris Foam Vest**  
MV807002



**Moxie Foam Vest**  
MV807502



**Trident Foam Vest**  
MV716002



### LIL LEGENDS FOAM VEST

**Model #:** Child: MV3556, Infant: MV3251

**Approval:** Harmonized Level 70 (USCG / TC Approved)

**Size:** Child: 33-55 lbs (15-25 kg), Infant: <33 lbs (15 kg)

- Soft fabric and moisture-wicking liner for all day comfort.
- Ventilated mesh back keeps things cool.
- Grab loop.
- Built-in crotch strap.
- 3-piece collar cradles head for extra buoyancy and improved in-water support.





**FUSION APOLLO™ STEREOS**

- Fusion Apollo™ MS-RA800 Marine Stereo - PART # 010-02937-00 - SKU 098844 **\$1,399<sup>99</sup>**<sub>MAP</sub>
- Fusion® Apollo™ MS-RA770 Marine Stereo With Built-in Wi-Fi® - PART # 010-01905-00 - SKU 098845 **\$1,019<sup>99</sup>**<sub>MAP</sub>
- Fusion® Apollo™ MS-RA670 Marine Stereo - PART # 010-02138-00 - SKU 098856 **\$699<sup>99</sup>**<sub>MAP</sub>
- Fusion® Apollo™ MS-WB675 Marine Hideaway Stereo - PART # 010-02346-50 SKU 098846 **\$729<sup>99</sup>**<sub>MAP</sub>
- Fusion® MS-RA210 Marine Stereo - PART # 010-02250-00 - SKU 098857 **\$539<sup>99</sup>**<sub>MAP</sub>
- Fusion® MS-RA60 Marine Stereo - PART #R 010-02405-00 - SKU 098754 **\$289<sup>99</sup>**<sub>MAP</sub>

**FUSION APOLLO™ SPEAKERS**

- 6.5" LED Marine Speakers with Sports Gray Grilles - PART # 010-02918-03 - SKU 098877 **\$799<sup>99</sup>**<sub>MAP</sub>
- 6.5" LED Marine Speakers with Sports White Grilles - PART # 010-02918-01 - SKU 098878 **\$799<sup>99</sup>**<sub>MAP</sub>
- 7.7" LED Marine Speakers with Sports Gray Grilles - PART #010-02918-13 - SKU 098879 **\$949<sup>99</sup>**<sub>MAP</sub>
- 7.7" LED Marine Speakers with Sports White Grilles - PART # 010-02918-11 - SKU 098880 **\$949<sup>99</sup>**<sub>MAP</sub>

**More product available at Steveston Marine - Call for Pricing**

**GRUNDÉNS**

		
2 Colours Keeper Sneaker Reg \$119 <sup>99</sup> <b>Sale \$89<sup>99</sup></b>	7 Colours Kid's Guppy Rain Boot Reg \$69 <sup>99</sup> <b>Sale \$49<sup>99</sup></b>	2 Colours Deck-Boss Ankle Boot Reg \$149 <sup>99</sup> <b>Sale \$115<sup>99</sup></b>
		
2 Colours Hauler Jacket Reg \$279 <sup>99</sup> <b>*Sale \$222<sup>99</sup></b>	9 Colours Full Share Jacket Reg \$179 <sup>99</sup> <b>Sale \$141<sup>99</sup></b>	6 Colours Mens & Women's Neptune Jacket Reg \$129 <sup>99</sup> <b>*Sale \$89<sup>99</sup></b>
		
Hauler Bib Reg \$269 <sup>99</sup> <b>*Sale \$205<sup>99</sup></b>	Full Share Bib Reg \$159 <sup>99</sup> <b>Sale \$123<sup>99</sup></b>	Neptune Bib Reg \$129 <sup>99</sup> <b>*Sale \$89<sup>99</sup></b>

\*For all Jackets/Bib/Pants add \$10 for 3XL and up

**BC-25-5 FOLDING PADDED HIGH BACK DECK CHAIR WITH CUP HOLDER**

Frame: anodized aluminium  
Fabric: 700d Polyspun  
Armrest: varnished hardwood  
BC-25-5  
SKU #085867  
Reg \$329.99 **Sale \$189<sup>99</sup>**  
**Limited Quantities**



**SMALL RECTANGULAR FOLDING DECK TABLE**

Model: BT-05  
Size: (L) 600 mm x (W) 400 mm x (H) 410 mm  
SKU #085869 Reg \$129.99  
**Sale \$109<sup>99</sup>**



**RECTANGULAR FOLDING DECK TABLE**

Model: BT-06  
Size: (L) 800 mm x (W) 400 mm x (H) 510 mm  
SKU #085870 Reg \$159.99  
**Sale \$139<sup>99</sup>**



**ROUND FOLDING DECK TABLE**

Model: BT-07  
Size: 600mm x H 400mm  
SKU # 085871 Reg \$129.99  
**Sale \$109<sup>99</sup>**

